

---

***Intermot Hydraulic Motors  
IHM Series***

---

***H3 Models***

---

***IHM 400 – 450 – 500 – 600 – 700 – 750 H3***

---

***INDEX***

TECHNICAL DATA	Pag. 17
IHM 400 – 450 – 500 – 600	
700 – 750 H3	Pag. 18
ORDERING INSTRUCTIONS	Pag. 19

## **IHM H3**

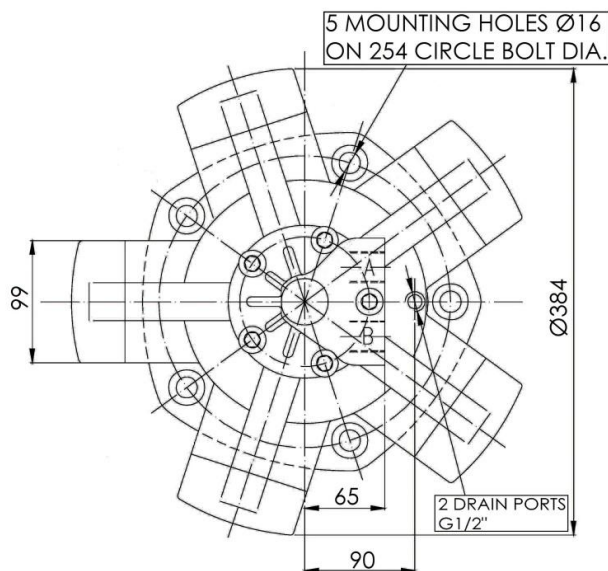
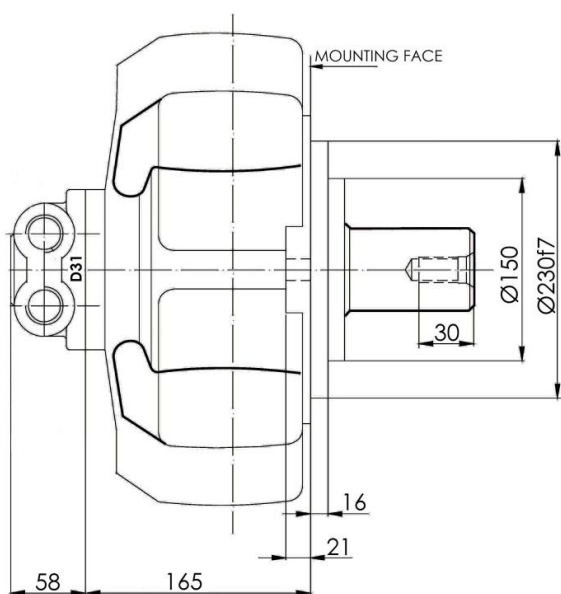
### **Technical data**

MODEL	N° of pistons	Displacement	Pressure		Speed		Torque		Dry Mass
			Max Cont.	Peak	Minimum speed	Max speed	Rated	Specific	
		cm3/rev	bar		rpm		Nm	Nm/MPa	kg
<b>IHM H3</b>	<b>400</b>	397	250	320	5	630	1469	59	57,5
	<b>450</b>	452	250	320	5	630	1672	67	
	<b>500</b>	491	200	250	5	500	1451	73	
	<b>600</b>	594	200	250	4	500	1756	88	
	<b>700</b>	683	160	200	4	400	1616	101	
	<b>750</b>	754	160	200	4	320	1785	112	

# IHM H3

## Dimensional drawings

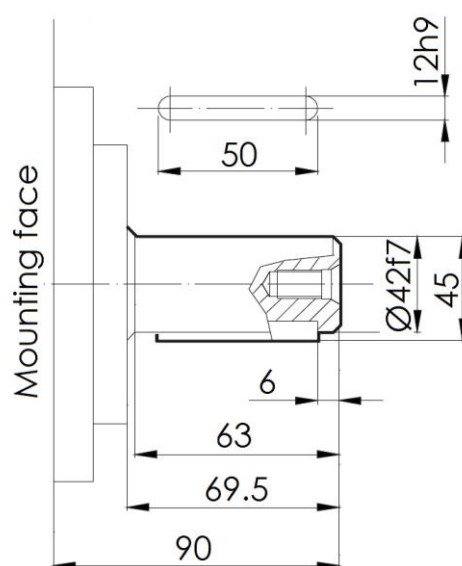
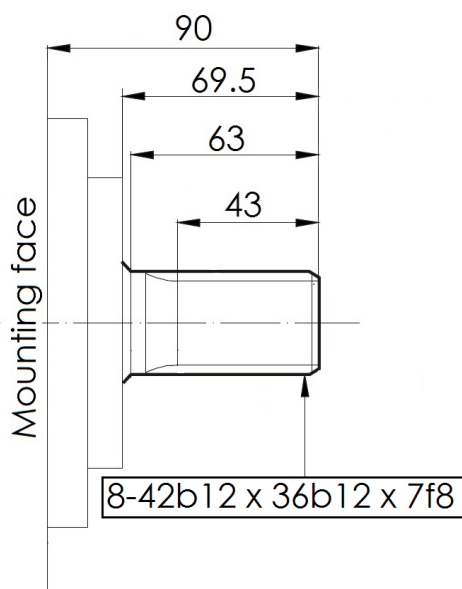
### IHM 400 – 450 – 500 – 600 – 700 – 750 H3



### SHAFTS

A0: Standard splined shaft

A1: Splined shaft on request



For further shaft configurations, please contact our technical department

# IHM H3

## Ordering instructions

IHM	---	H3	A _	D _ _
Model	Displacement	Housing	Shaft	Distributor
400 cc/rev				
450 cc/rev				
500 cc/rev				
600 cc/rev				
700cc/rev				
750 cc/rev				
H3				
A0 – Standard splined shaft				
A2 – Parallel keyed shaft				
D31 – ¾" BSP				
D310 – 1" BSP				
D40 – 1" BSP				
D47 – SAE 1" 3000 psi flange				

**EXAMPLE : IHM 600 H3 A0 D40**