
Intermot Hydraulic Motors
IAM+ Series

H7 Model

IAM+3900 – 4300 – 4600 – 5000 – 5400 H7

INDEX

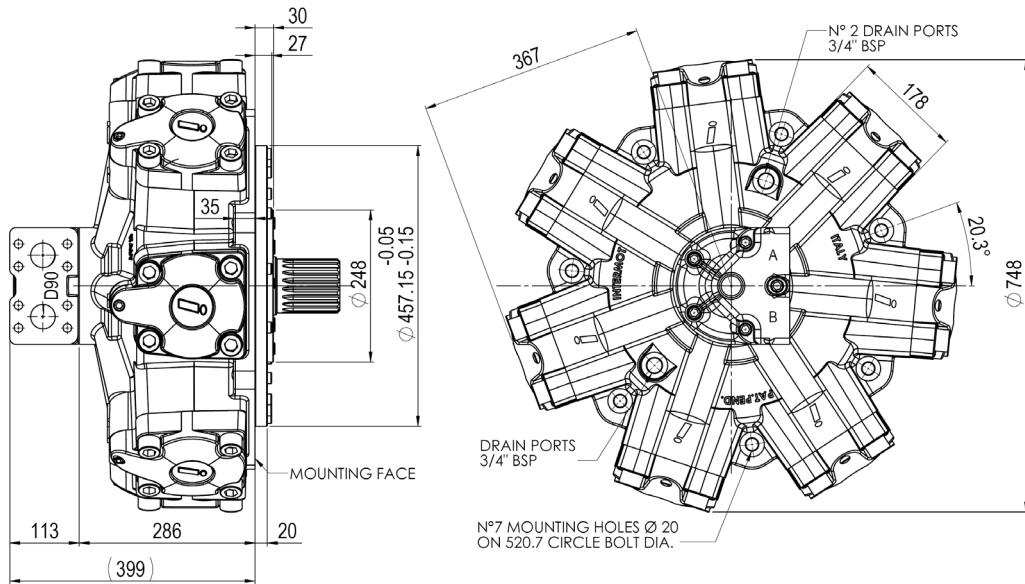
TECHNICAL DATA	Pag. 68
IAM+ 3900 - 4300 - 4600	
5000 - 5400 H7	Pag. 69
GRAPHIC PERFORMANCES	Pag. 70
ORDERING INSTRUCTIONS	Pag. 75

IAM+ H7

Technical data

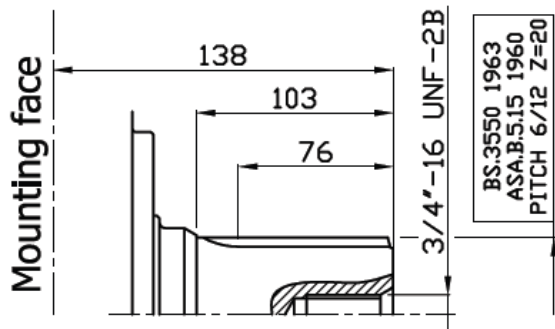
MODEL		N° of pistons	Displacement	Specific Torque	Pressure			Speed		Max Power		Dry Mass	Max case pressure	Max back pressure	Temperature range	Minimum speed	Inertia moment of rotating parts
					Max Cont.	Max Int.	Peak	Max Cont.	Peak								
			cm ³ /rev	Nm/bar	bar			rpm		hp	kW	kg	bar	bar	°C	rpm	kg cm ²
IAM+ H7	3900	7	3909	62.2	300	350	400	160	200	290	216	405	6	70	- 30 + 70	0.5	4064
	4300		4345	69.2	300	350	400	150	190	290	216	405					
	4600		4618	73.5	300	350	400	140	190	290	216	405					
	5000		5092	81.0	300	350	400	140	180	290	216	405					
	5400		5387	85.7	300	350	400	130	170	290	216	405					

IAM+ 3900 – 4300 – 4600 – 5000 – 5400 H7

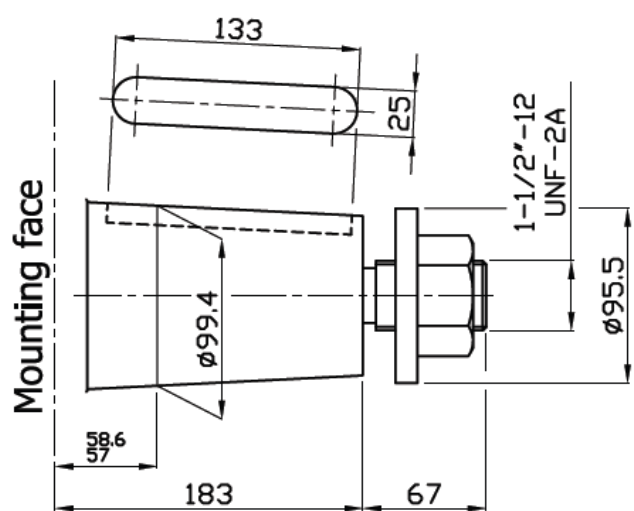


SHAFTS

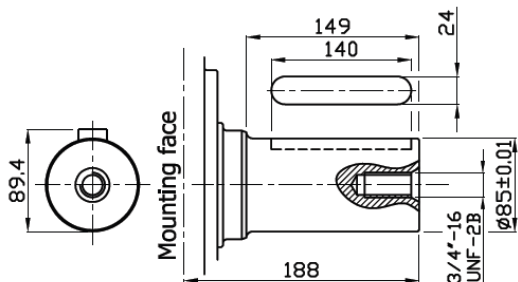
A1: Standard splined shaft



A4: Taper shaft on request

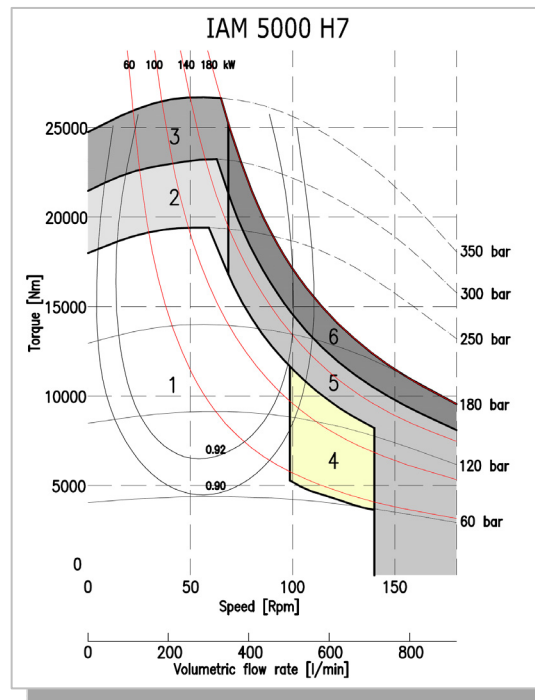
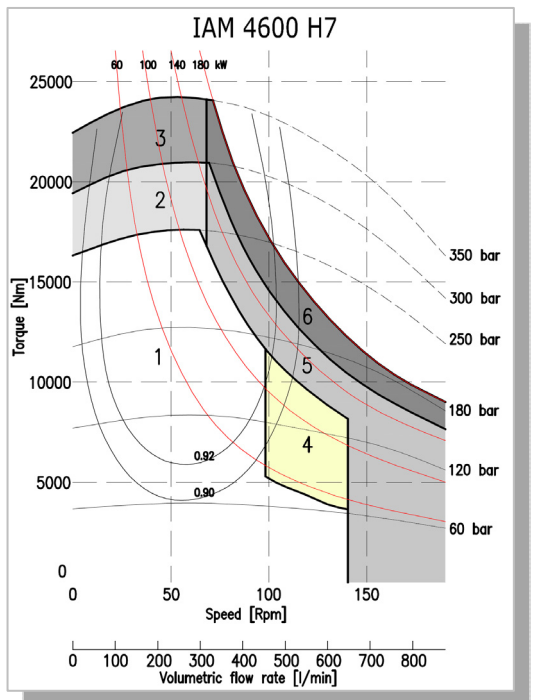
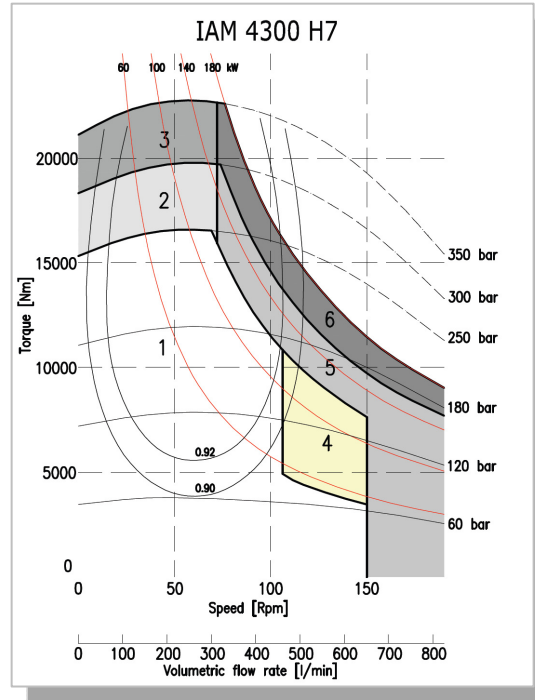
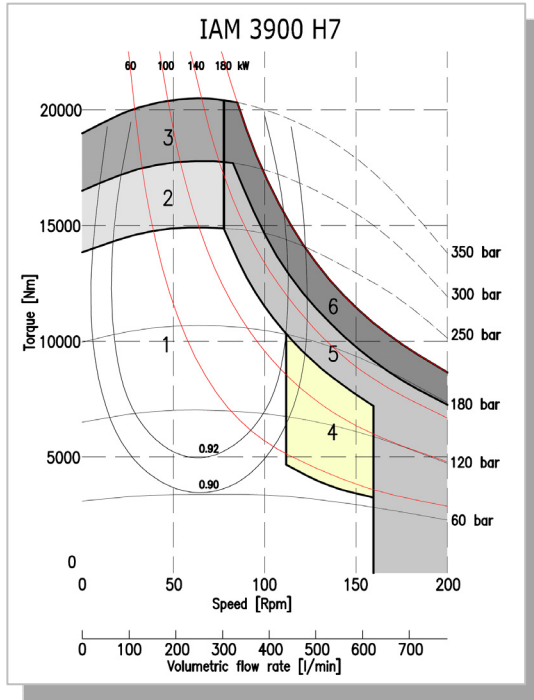


A2: Parallel shaft on request



IAM+ H7

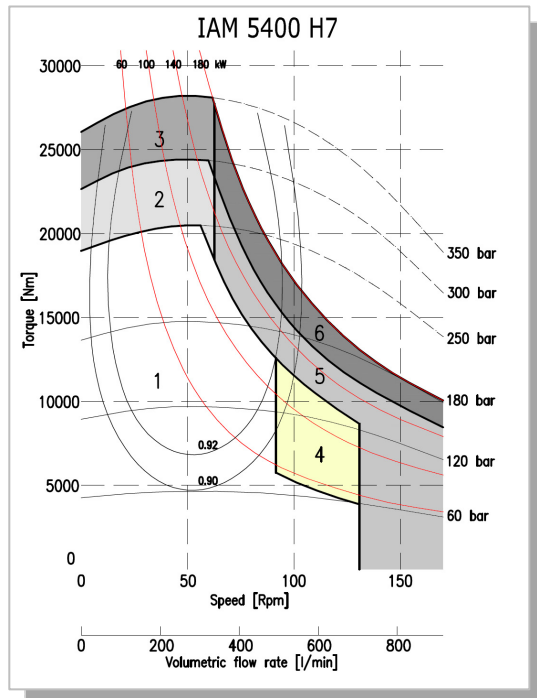
Power charts



The data specified into this catalogue are for product description purpose only and must not be interpreted as warranted characteristic in legal sense. Intermot reserves the right to implement modification without notice. 70

IAM+ H7

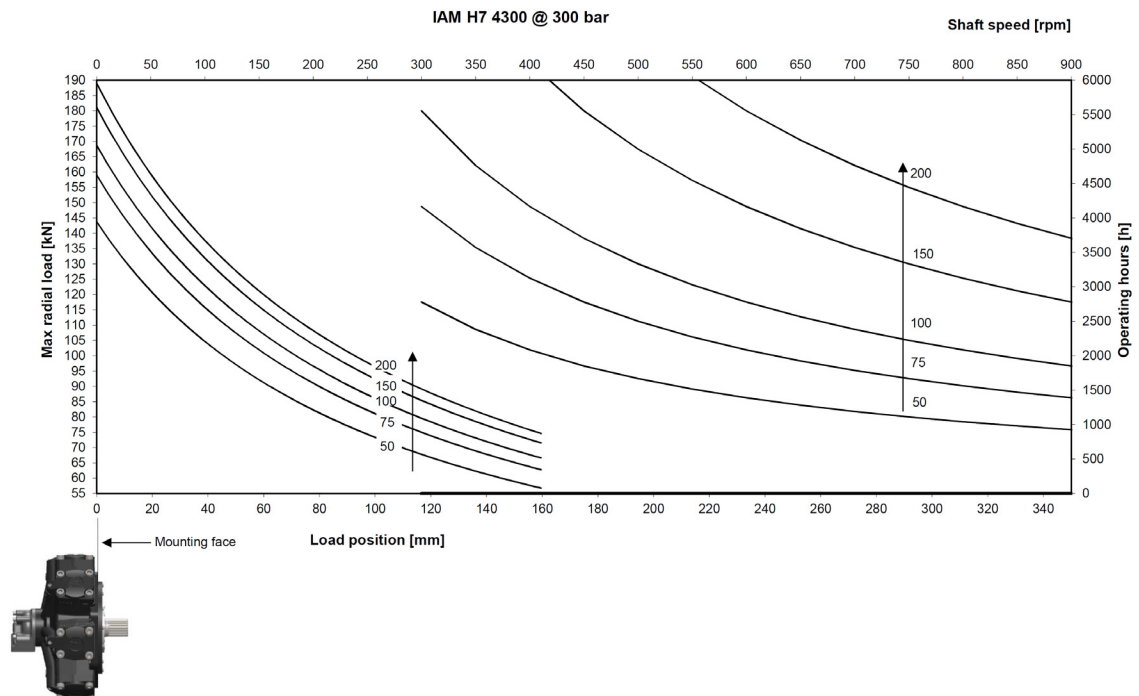
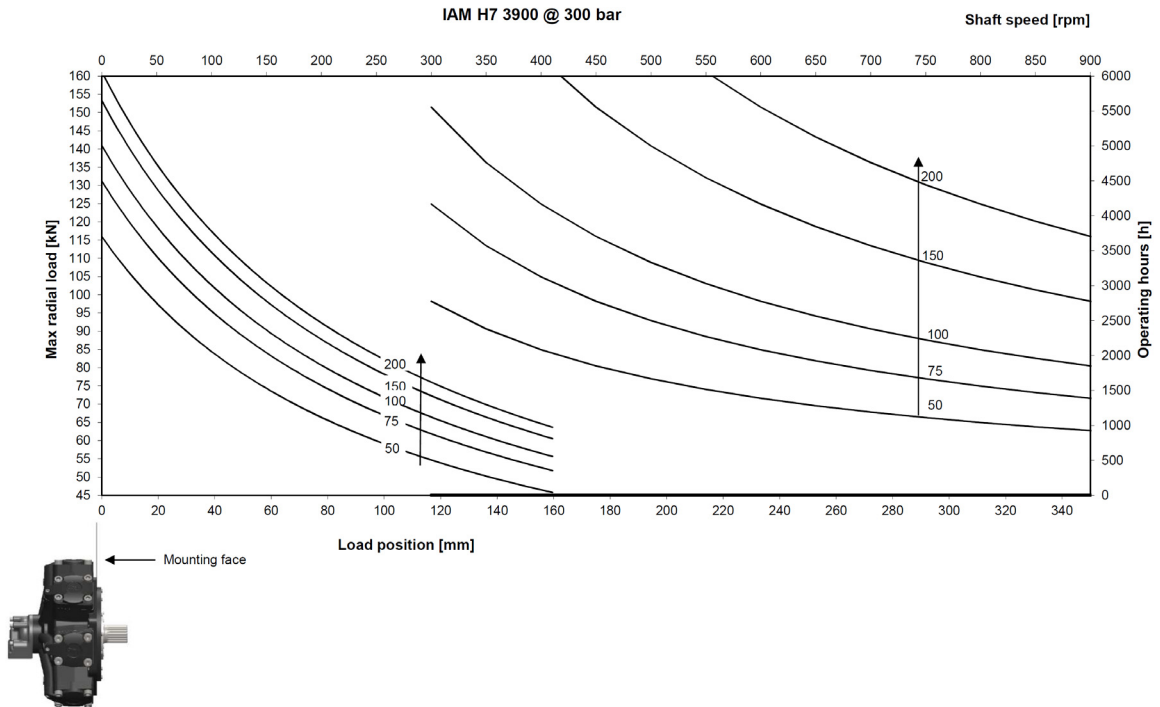
Power charts



1	Continuous operation
2	Intermittent operation for period 3-5 minutes every 10-15 minutes
3	Intermittent operation for very short period (3-5 seconds every 10-15 minutes)
4	Continuous operation with flushing
5	Intermittent operation for period 3-5 minutes every 10-15 minutes with flushing
6	Intermittent operation for very short period (3-5 seconds every 10-15 minutes) with flushing

IAM+ H7

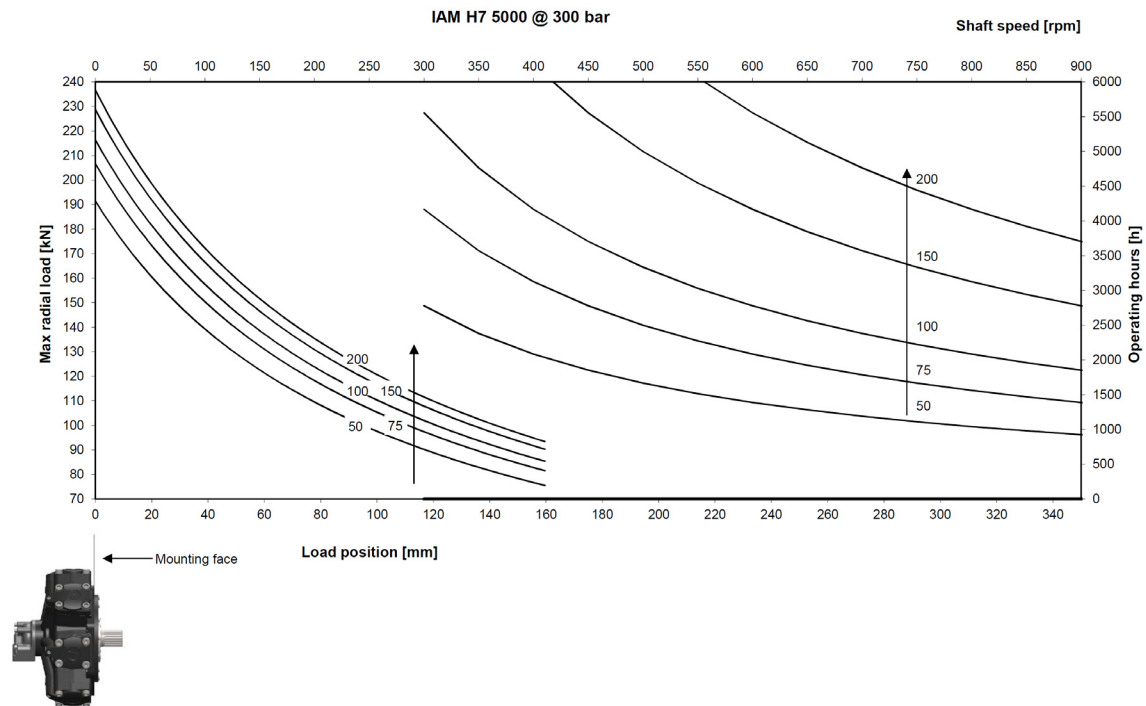
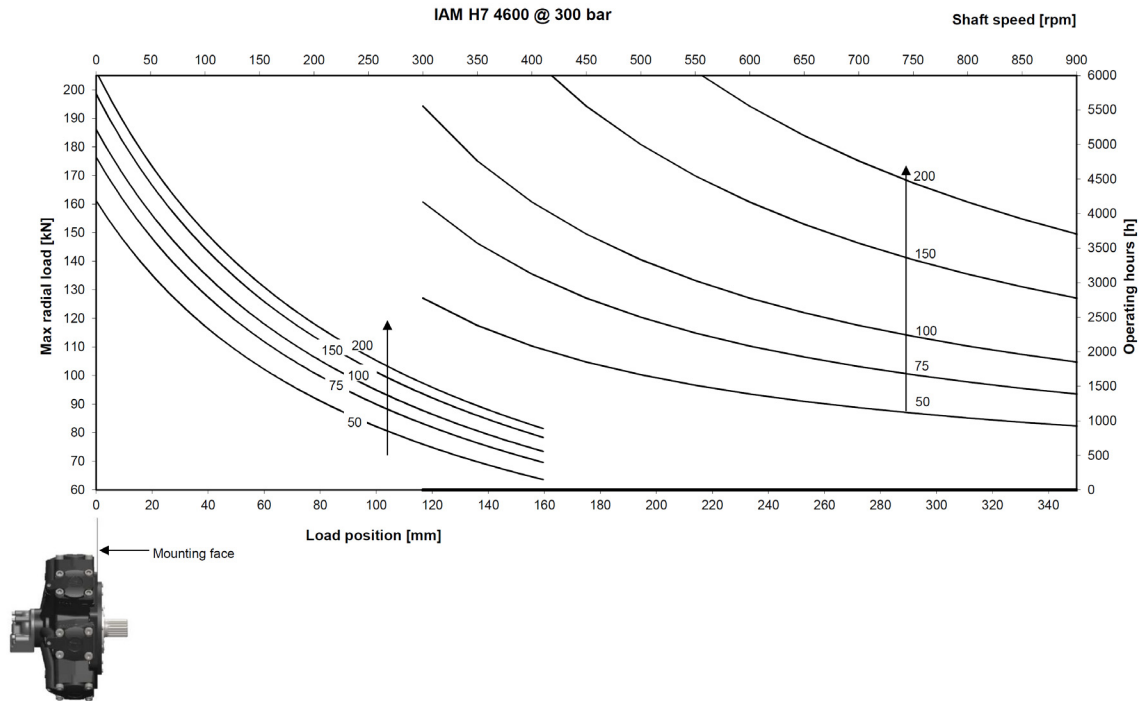
Side load charts



The data specified into this catalogue are for product description purpose only and must not be interpreted as warranted characteristic in legal sense. Intermot reserves the right to implement modification without notice. 72

IAM+ H7

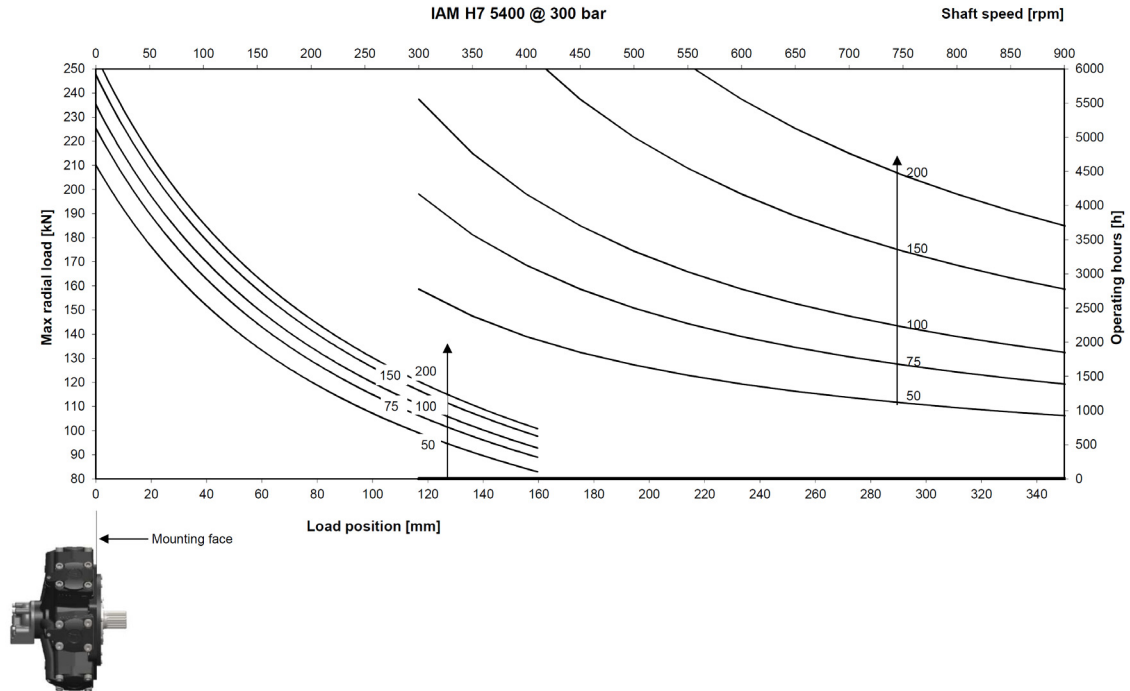
Side load charts



The data specified into this catalogue are for product description purpose only and must not be interpreted as warranted characteristic in legal sense. Intermot reserves the right to implement modification without notice. 73

IAM+ H7

Side load charts



IAM+ H7

Ordering instructions

IAM+	---	H7	A _	D _	--	SB _
Model						
Displacement						
3900 cc/rev						
4300 cc/rev						
4600 cc/rev						
5000 cc/rev						
5400 cc/rev						
Housing						
Shaft						
A1 – Standard splined shaft						
A2 – Parallel keyed shaft						
A4 – Tapered shaft						
Distributor						
D90 – SAE 1 ½ “ 6000 psi flange						
Tachometer						
K						
TA						
TB						
EST						
						Spline billet
SB10 – BS 3550 20 T 6/12						
SB11 – 102 UNI 222						

EXAMPLE : IAM+ 4300 H7 A1 D90

IAM+ 4600 H7 A1 D90 TB SB10