

Intermot Valves

TECHNICAL CATALOGUE

INDEX

GENERAL INFORMATION	Pag. 2
RVDA SERIES	Pag. 3
OVSA SERIES	Pag. 6
OVDA SERIES	Pag. 9
ORVSA SERIES	Pag. 12
RVDAP	Pag. 15

.

General Information

Intermot can supply a wide range of flangeable valves, that can be easily mounted on Intermot hydraulic motors.

OVERCENTER VALVE

The overcenter valves are required when static and dynamic control is needed.

Single overcenter valve

The single overcenter valve (OVSA) is used for unidirectional loads. The single overcenter valve can be supplied with an integrated relief valve too (ORVSA Series).

Dual overcenter valve

The dual overcenter valve (OVDA) is used for bidirectional loads.

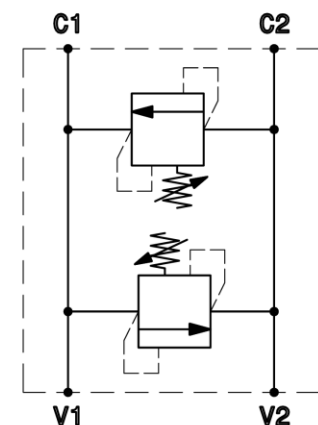
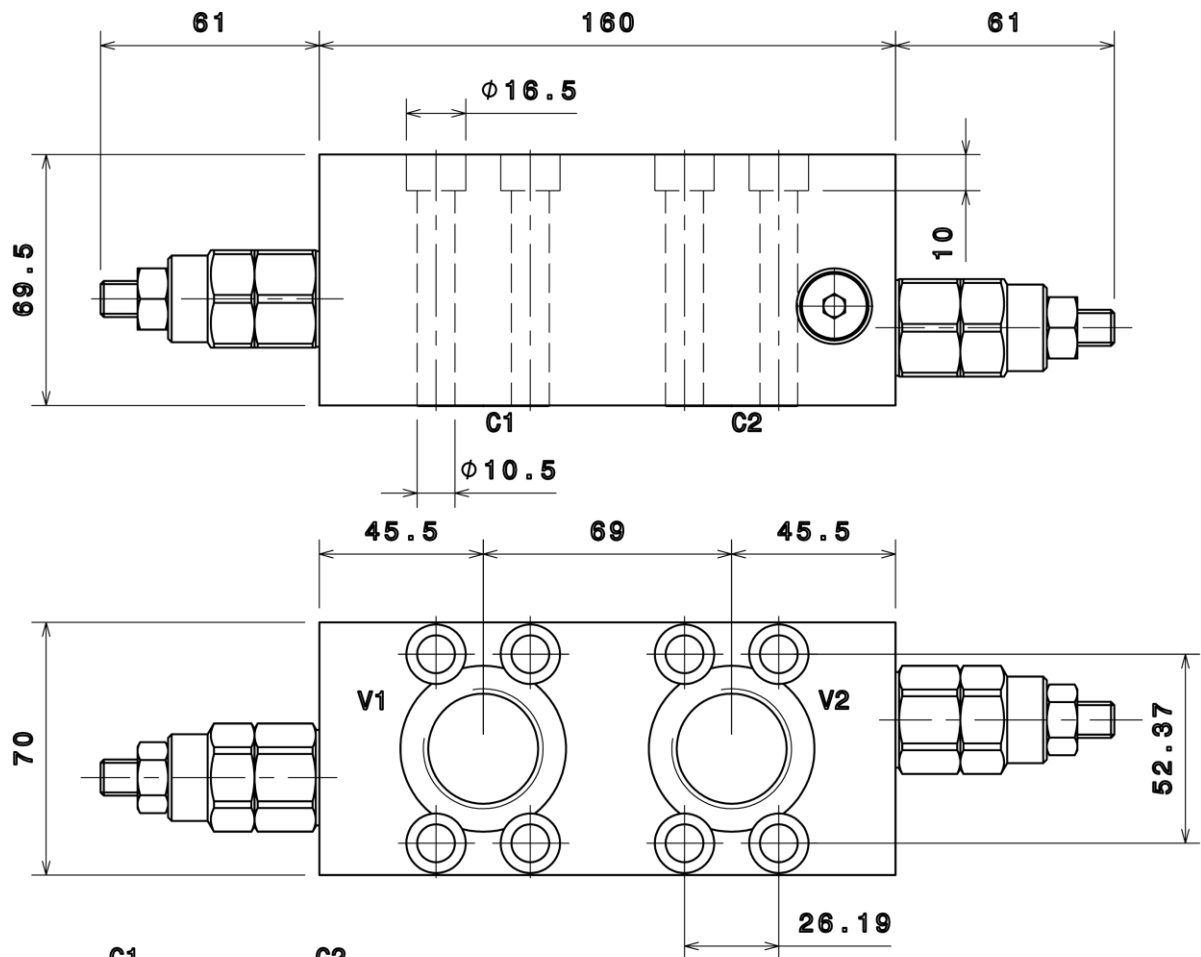
DUAL RELIEF VALVE

The dual cross over relief valve (RVDA) is used to avoid motor pressure peaks.

The maximum pressure can be set adjusting the relief valve screw. The dual cross relief valve can be supplied with an integrated flushing valve (RVDAP Series).

On request, the RVDA valves can be mounted together with OVSA or OVDA valves. For further details please contact Intermot S.r.l. technical department.

RVDA 80



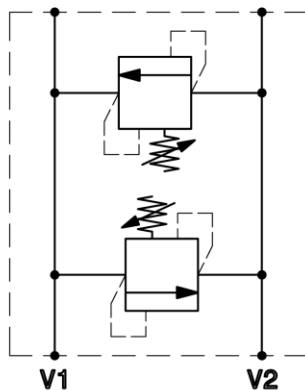
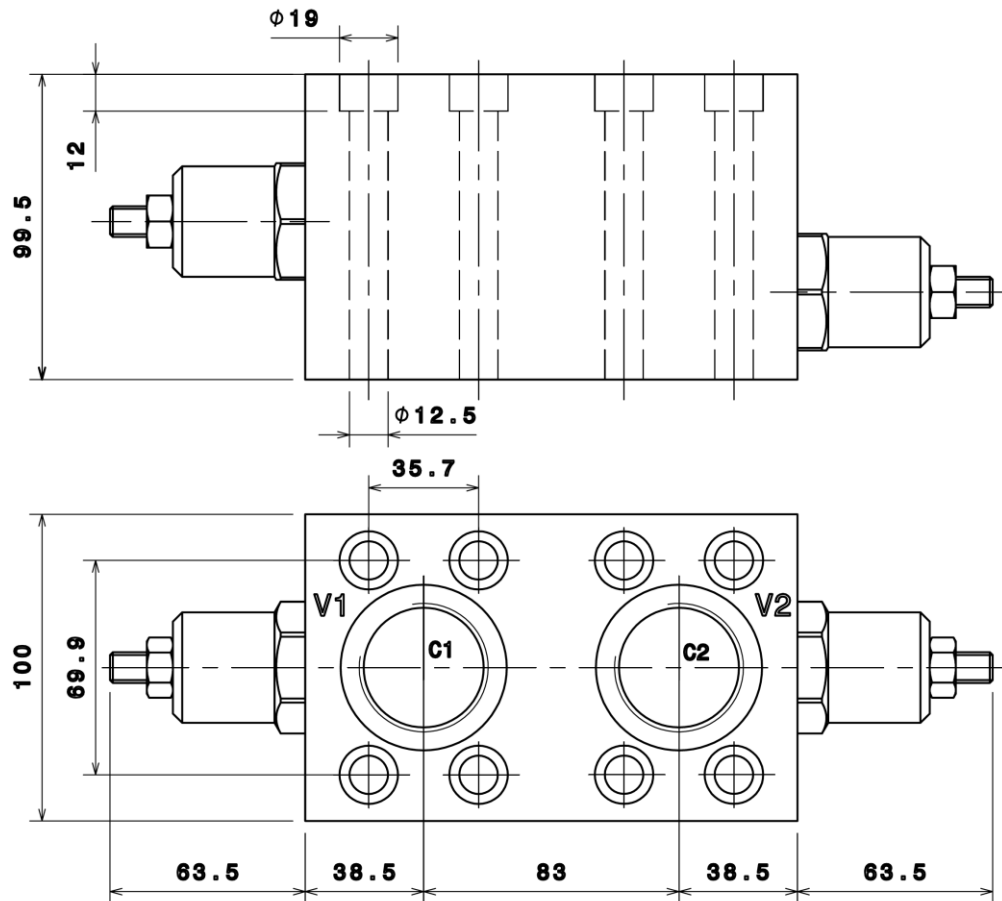
PORTS DIMENSION	
V1,V2	1" BSPP
C1,C2	O-ring 2-125

TECHNICAL DATA	
Material	Anodized aluminium corrosion resistant
Maximum pressure	300 bar
Maximum flow rate	80 l/min
Relief valve setting range	A
	20-100 bar
	standard setting 80 bar
	B
	40-250 bar
	standard setting 180 bar
	C
	60-350 bar
	standard setting 250 bar

Intermot distributor fitting

D47

RVDA 200



PORTS DIMENSION	
V1,V2	1"1/4 BSPP
C1,C2	O-Ring 2-224

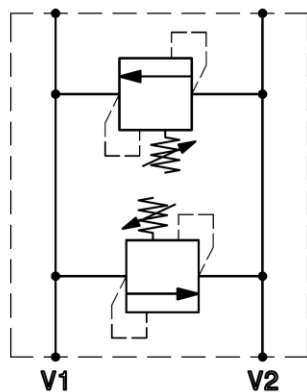
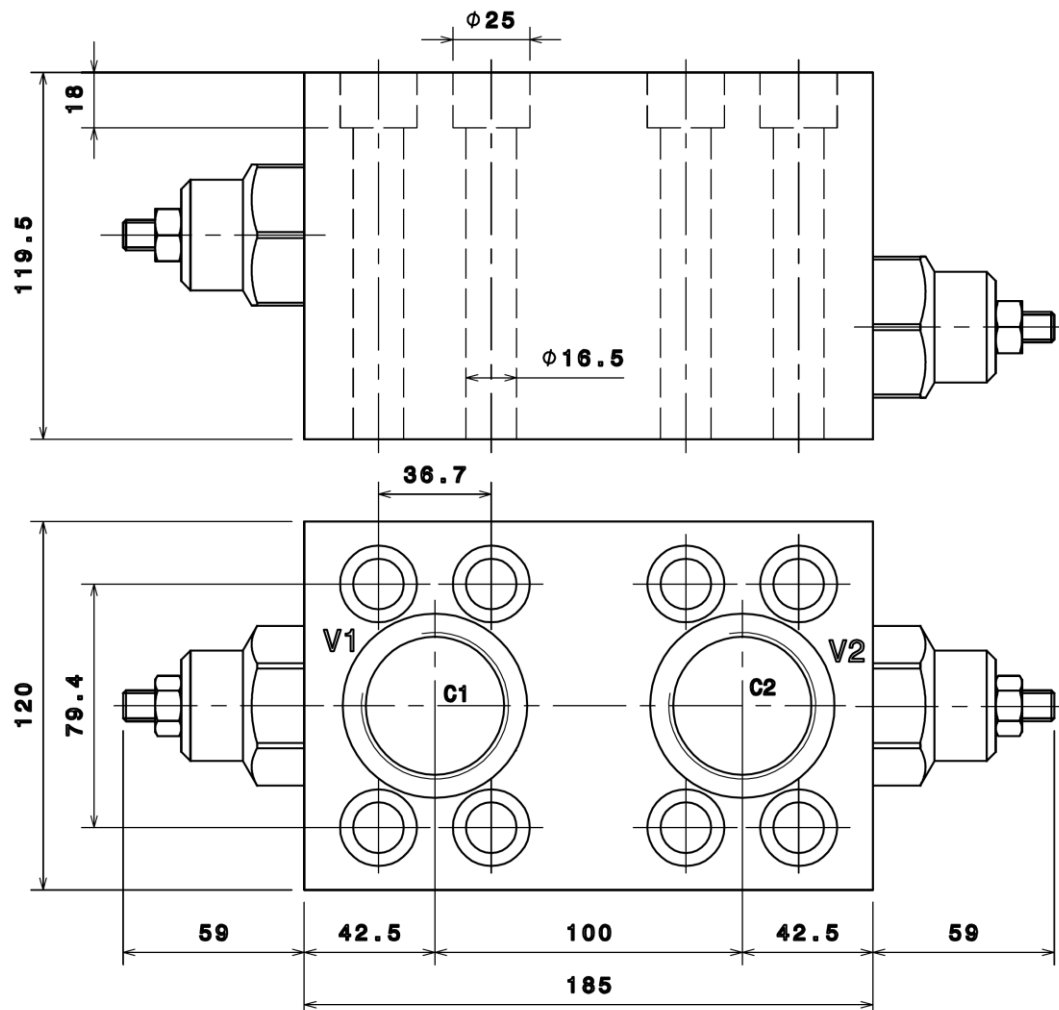
TECHNICAL DATA	
Material	Anodized aluminium corrosion resistant
Maximum pressure	300 bar
Maximum flow rate	200 l/min
Relief valve setting range	A
	20-100 bar
	standard setting 80 bar
	B
	40-250 bar
	standard setting 180 bar
	C
	60-350 bar
	standard setting 250 bar

Intermot distributor fitting

D75

RVDA Series

RVDA 380



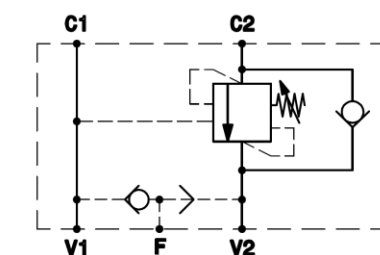
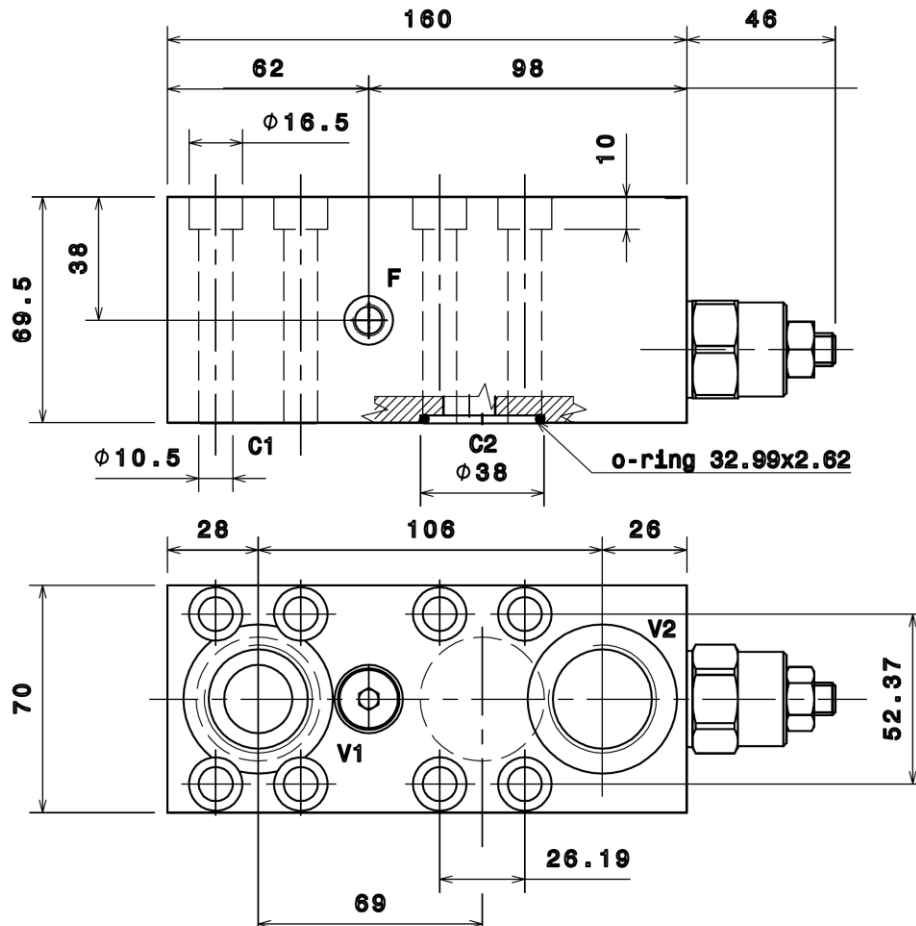
PORTS DIMENSION	
V1,V2	1"1/2 BSPP
C1,C2	0-Ring 2-225

TECHNICAL DATA		
Material	Anodized aluminium corrosion resistant	
Maximum pressure	300 bar	
Maximum flow rate	380 l/min	
Relief valve setting range	A	20–100 bar
		standard setting 80 bar
	B	40–250 bar
		standard setting 180 bar
	C	60–350 bar
		standard setting 250 bar

Intermot distributor fitting

D90

OVSA 160



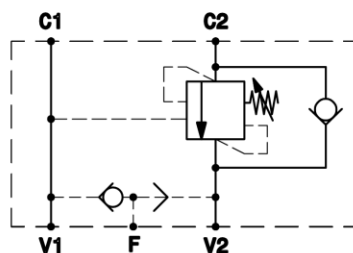
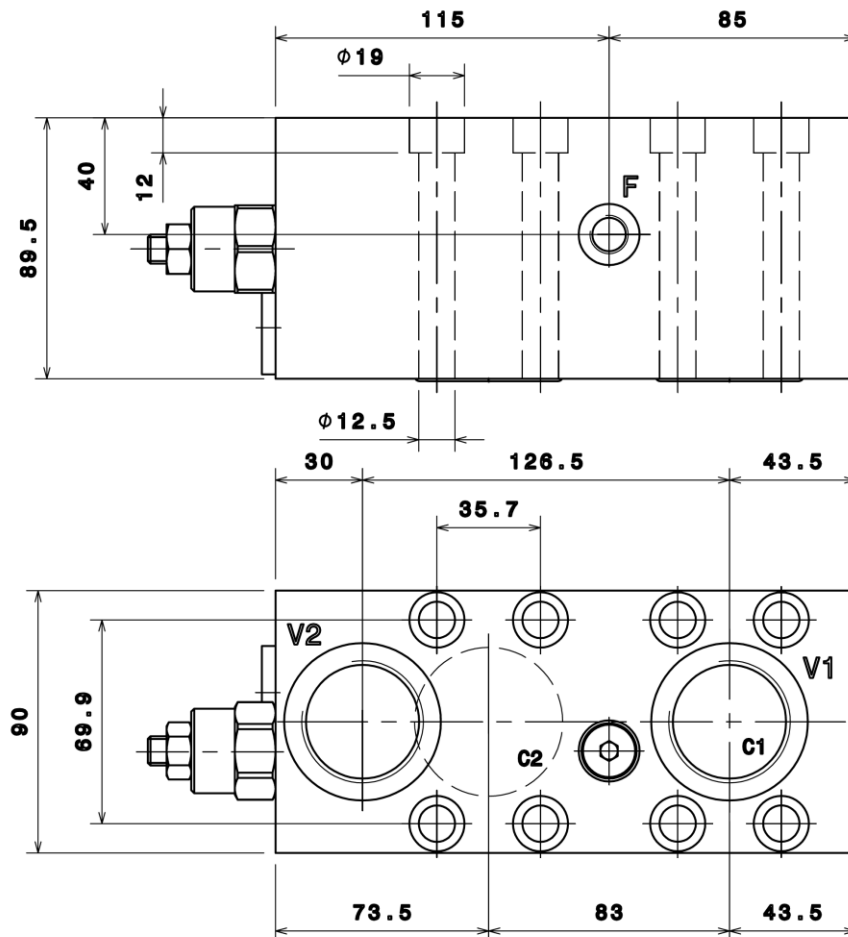
PORTS DIMENSION	
V1,V2	1" BSPP
C1,C2	O-ring 2-125
F	1/4" BSPP

TECHNICAL DATA		
Material	Anodized aluminium corrosion resistant	
Peak pressure	350 bar	
Maximum pressure	270 bar	
Maximum flow rate	150 l/min	
Pilot ratio	1	3:1
	2	4.25:1
	3	8:1
	4	10:1
Relief valve setting range	A	20-200 bar
		standard setting 100 bar
	B	50-350 bar
		standard setting 280 bar

Intermot distributor fitting

D47

OVSA 300



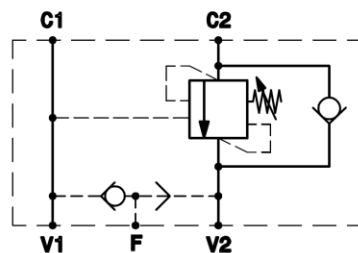
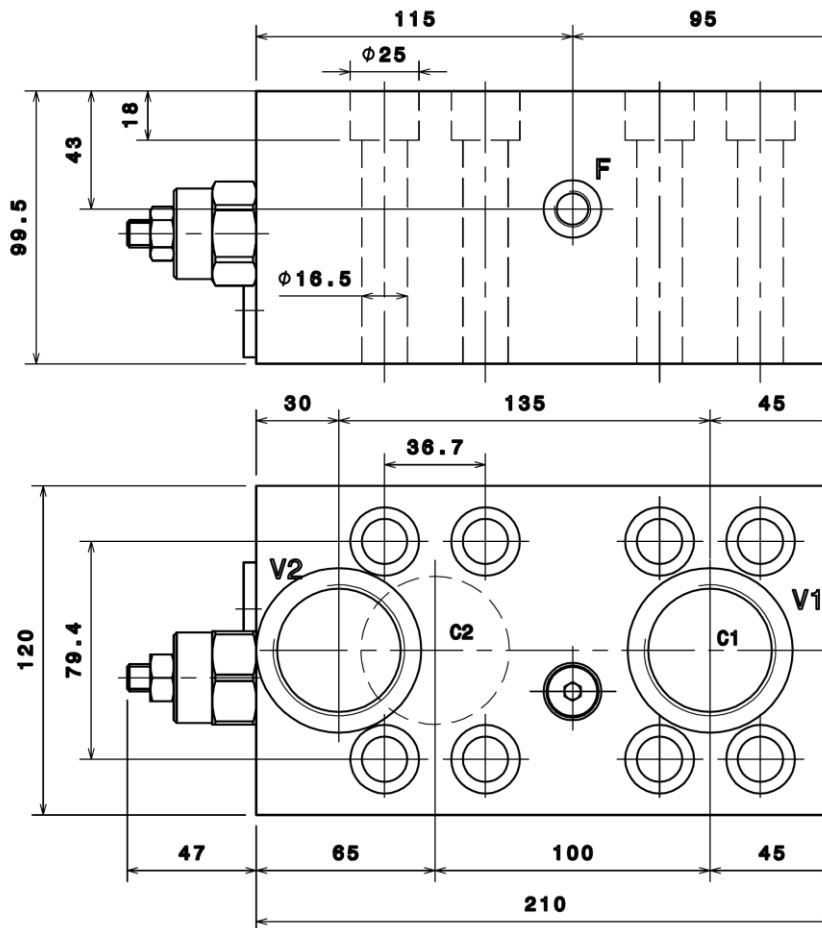
PORTS DIMENSION	
V1,V2	1"1/4" BSPP
C1,C2	O-Ring 2-224
F	1/4" BSPP

TECHNICAL DATA		
Material	Anodized aluminium corrosion resistant	
Peak pressure	350 bar	
Maximum pressure	300 bar	
Maximum flow rate	300 l/min	
Pilot ratio	1	3:1
	2	4.25:1
	3	8:1
	4	10:1
Relief valve setting range	A	20-200 bar standard setting 100 bar
	B	50-350 bar standard setting 280 bar

Intermot distributor fitting

D75

OVSA 480



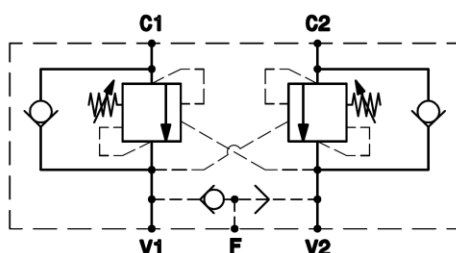
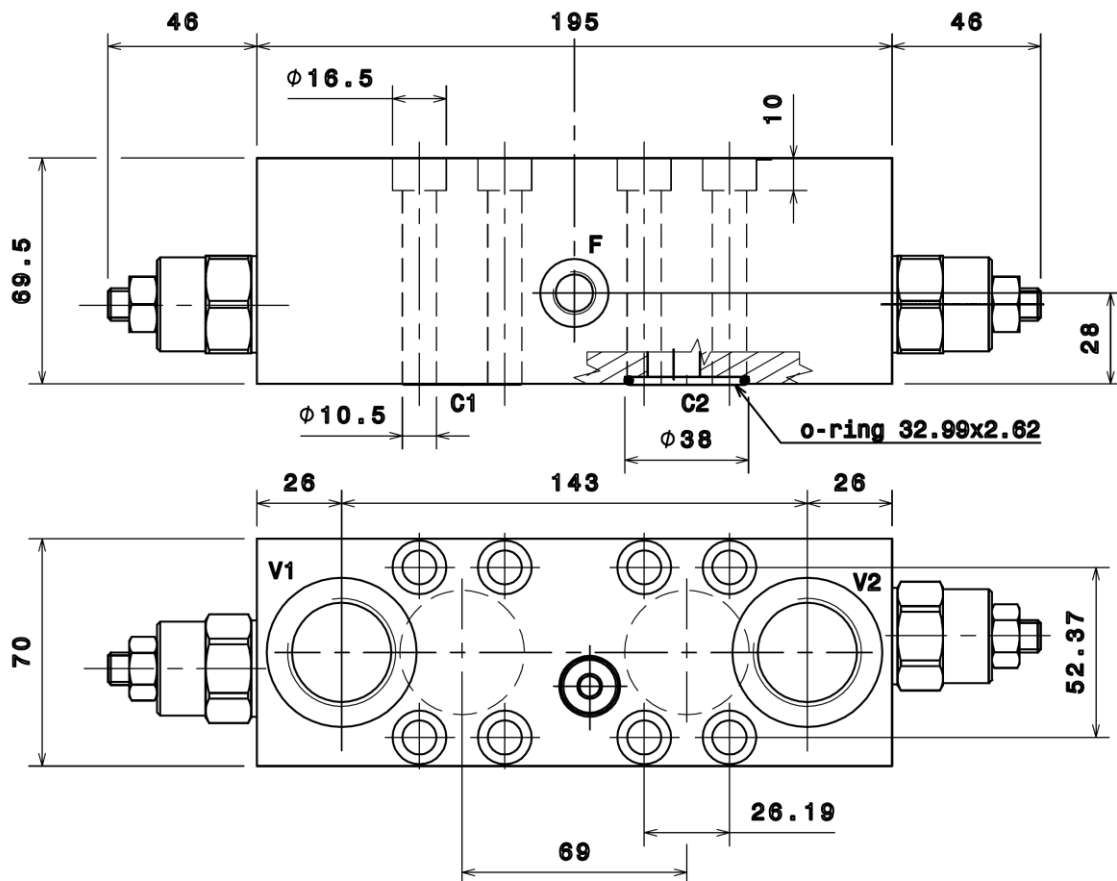
PORTS DIMENSION	
V1,V2	1"1/2 BSPP
C1,C2	O-Ring 2-225
F	1/4" BSPP

TECHNICAL DATA	
Material	Anodized aluminium corrosion resistant
Peak pressure	350 bar
Maximum pressure	300 bar
Maximum flow rate	480 l/min
Pilot ratio	1 3:1
	2 4.25:1
	3 8:1
	4 10:1
Relief valve setting range	A 20-200 bar standard setting 100 bar
	B 50-350 bar standard setting 280 bar

Intermot distributor fitting

D90

OVDA 160



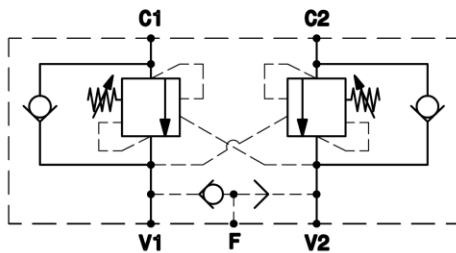
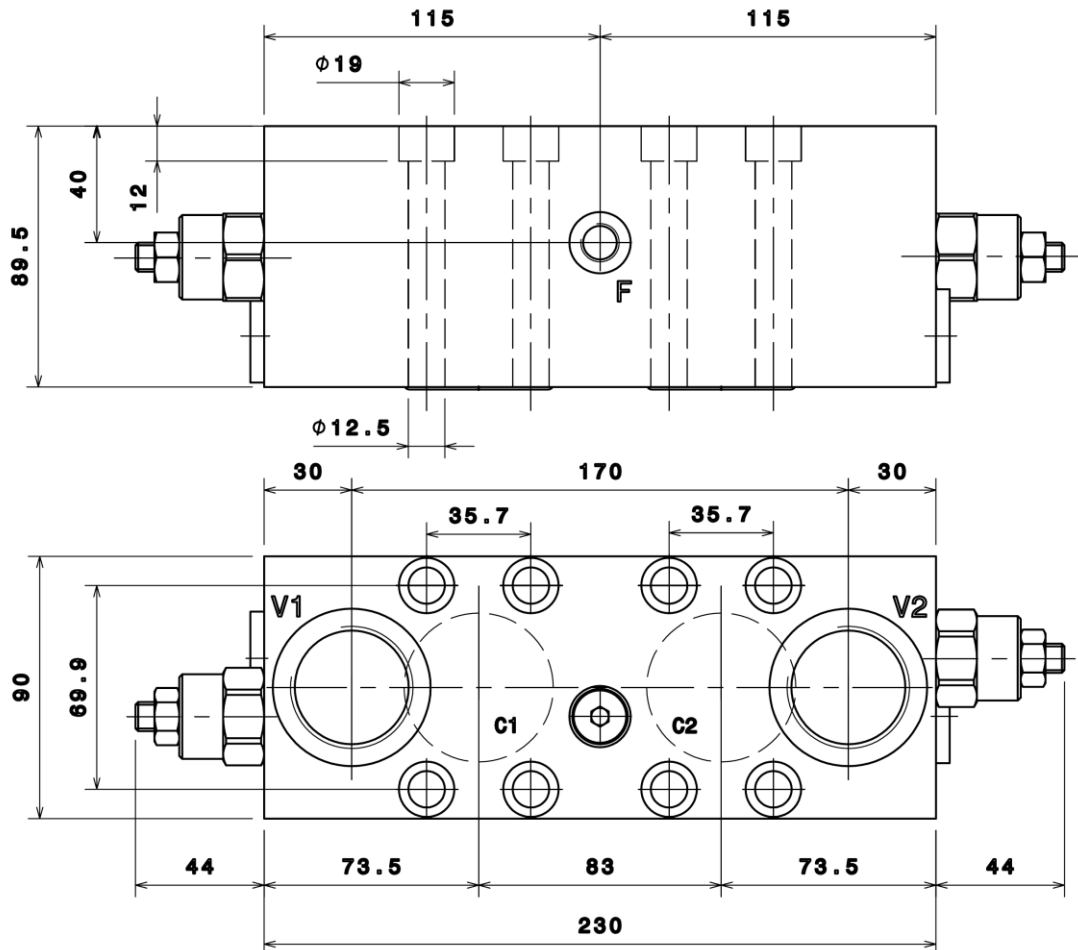
PORTS DIMENSION	
V1,V2	1" BSPP
C1,C2	O-ring 2-125
F	1/4" BSPP

TECHNICAL DATA		
Material	Anodized aluminium corrosion resistant	
Peak pressure	350 bar	
Maximum pressure	270 bar	
Maximum flow rate	150 l/min	
Pilot ratio	1	3:1
	2	4.25:1
	3	8:1
	4	10:1
Relief valve setting range	A	20-200 bar standard setting 100 bar
		50-350 bar standard setting 280 bar
	B	20-200 bar standard setting 100 bar
		50-350 bar standard setting 280 bar

Intermot distributor fitting

D47

OVDA 300



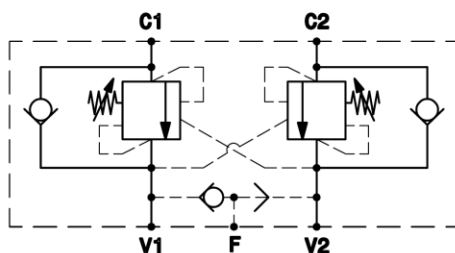
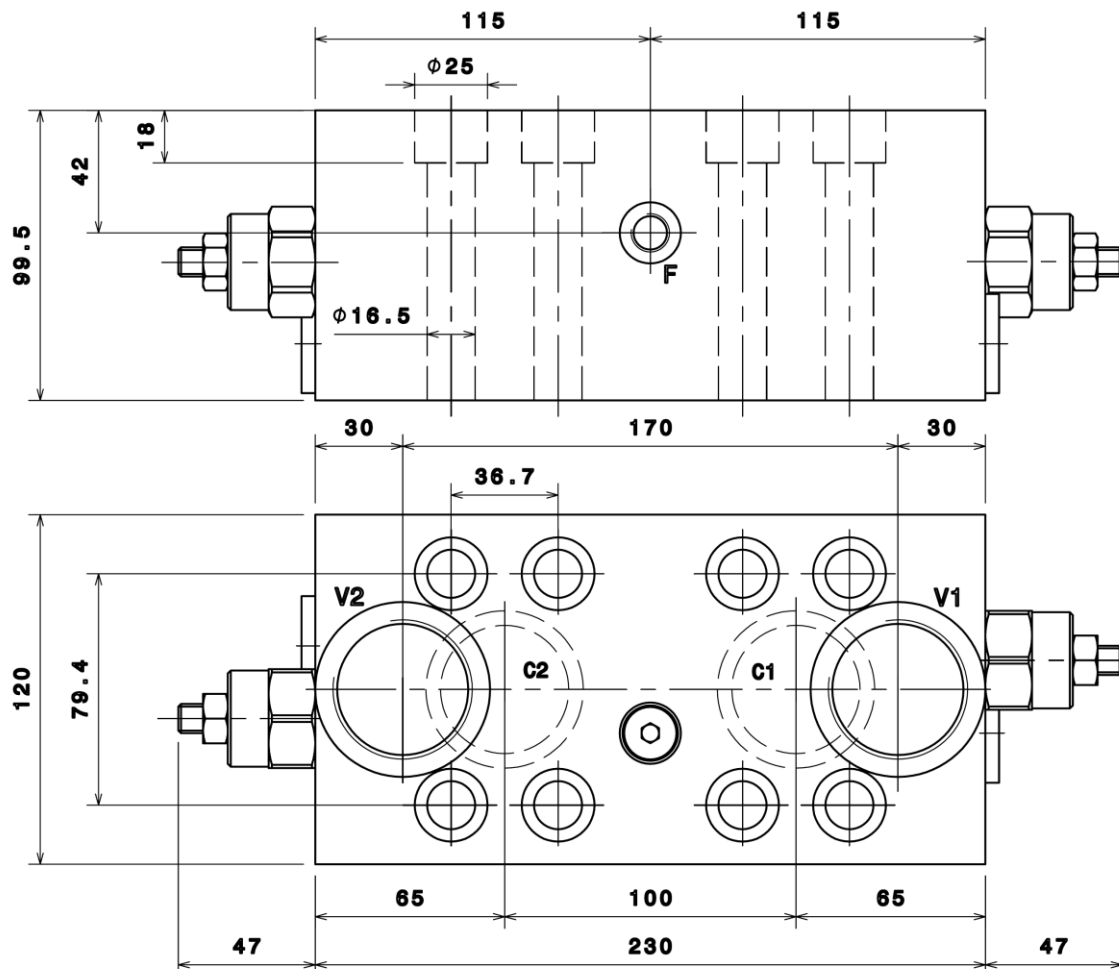
PORTS DIMENSION	
V1,V2	1"1/4 BSPP
C1,C2	O-Ring 2-224
F	1/4" BSPP

TECHNICAL DATA	
Material	Anodized aluminium corrosion resistant
Peak pressure	350 bar
Maximum pressure	300 bar
Maximum flow rate	300 l/min
Pilot ratio	1 3:1
	2 4.25:1
	3 8:1
	4 10:1
Relief valve setting range	A 20-200 bar
	standard setting 100 bar
	B 50-350 bar
	standard setting 280 bar

Intermot distributor fitting

D75

OVDA 480



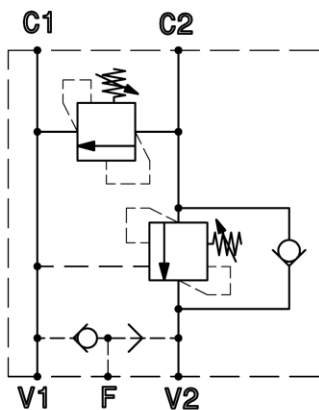
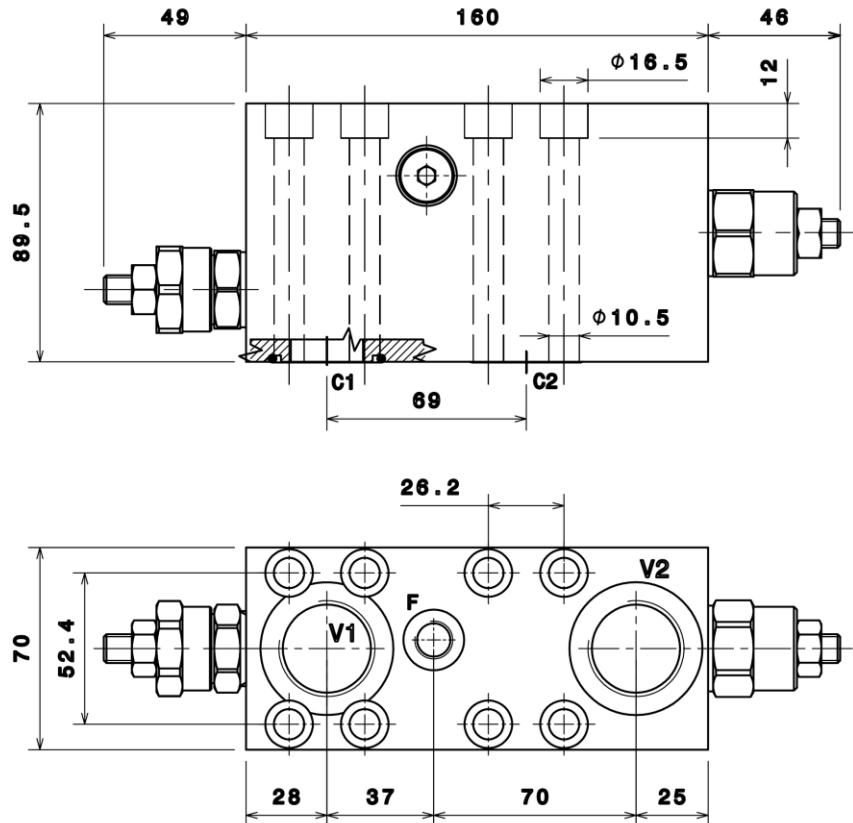
PORTS DIMENSION	
V1,V2	1"1/2 BSPP
C1,C2	O-Ring 2-225
F	1/4" BSPP

TECHNICAL DATA	
Material	Anodized aluminium corrosion resistant
Peak pressure	350 bar
Maximum pressure	300 bar
Maximum flow rate	480 l/min
Pilot ratio	1 3:1
	2 4.25:1
	3 8:1
	4 10:1
Relief valve setting range	A 20-200 bar standard setting 100 bar
	B 50-350 bar standard setting 280 bar

Intermot distributor fitting

D90

ORVSA 160



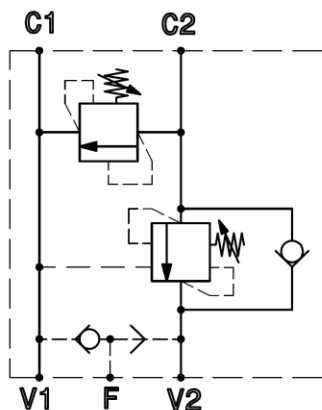
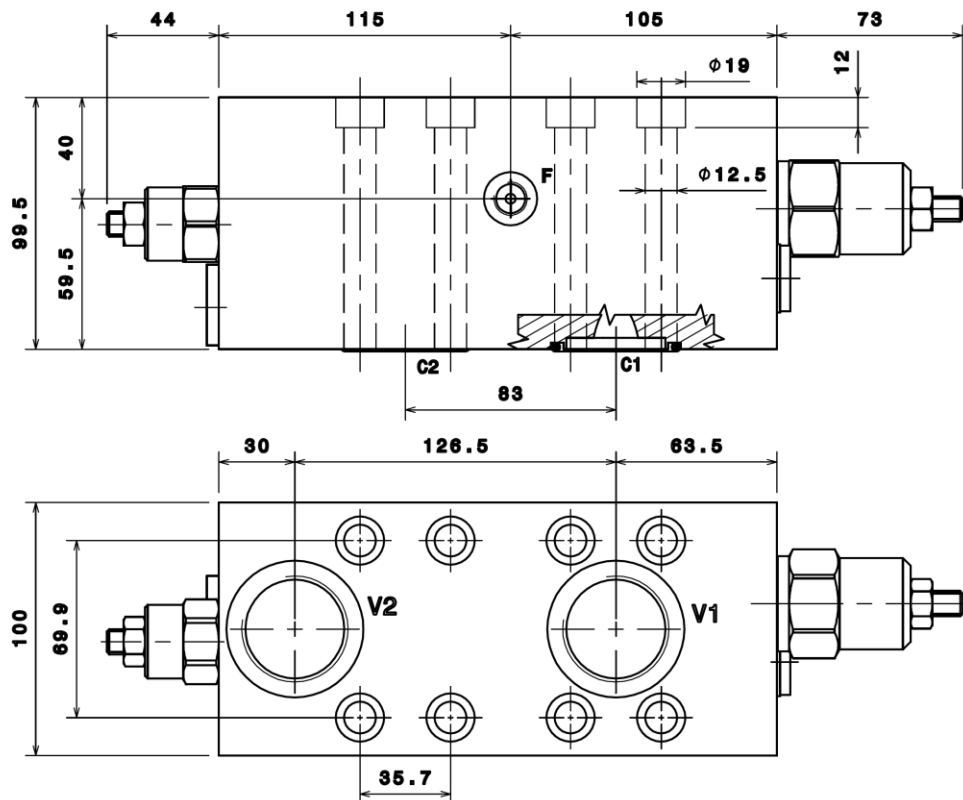
PORTS DIMENSION	
V1,V2	1" BSPP
C1,C2	O-Ring 2-126
F	1/4" BSPP

TECHNICAL DATA	
Material	Anodized aluminium corrosion resistant
Peak pressure	350 bar
Maximum pressure	300 bar
Maximum flow rate	150 l/min
Pilot ratio	1 3:1
	2 4.25:1
	3 8:1
	4 10:1
OVC relief valve setting range	A 20-200 bar standard setting 100 bar
	B 50-350 bar standard setting 280 bar
VLP relief valve setting range	A 20-100 bar standard setting 80 bar
	B 40-250 bar standard setting 180 bar
	C 60-350 bar standard setting 250 bar

Intermot distributor fitting

D47

ORVSA 300



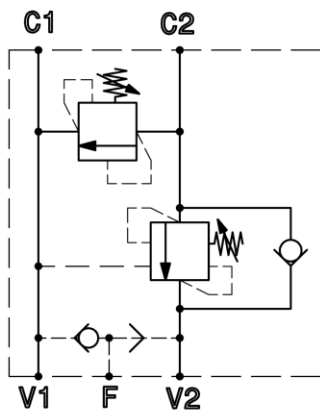
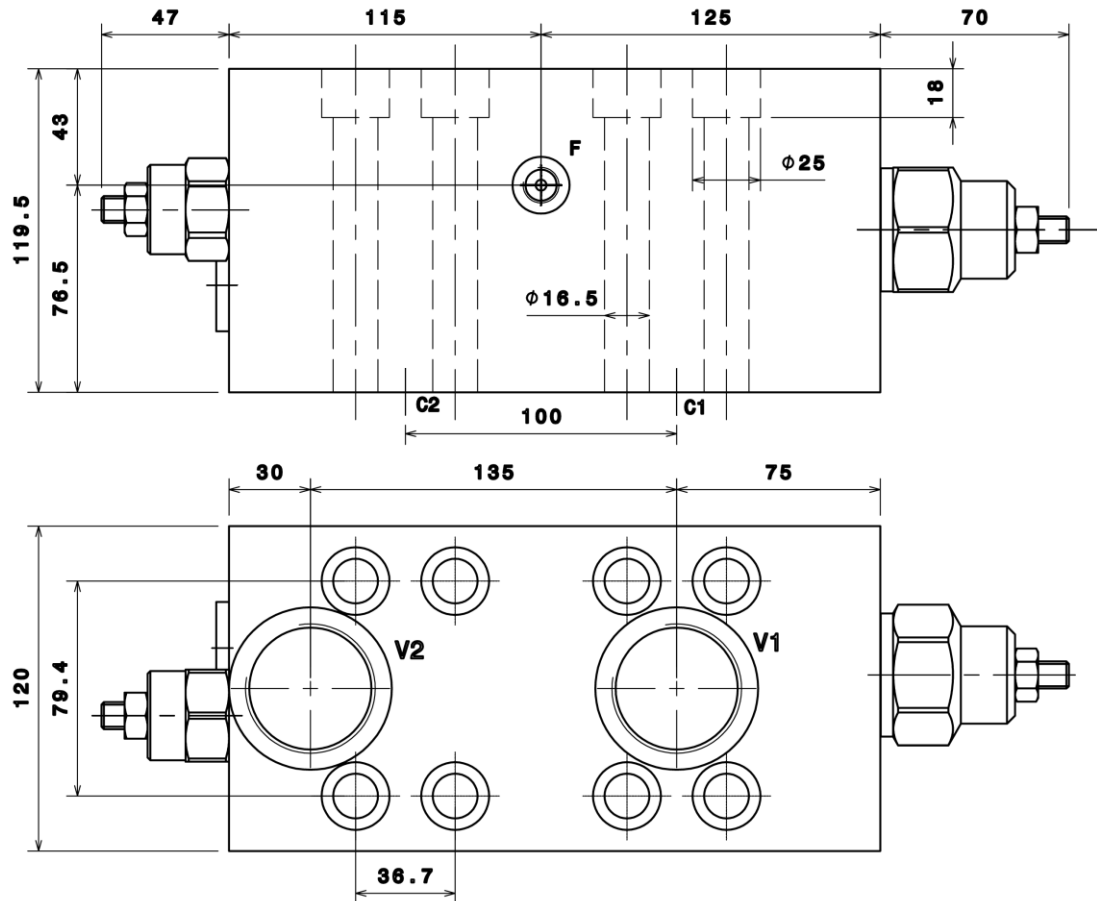
PORTS DIMENSION	
V1,V2	1"1/4 BSPP
C1,C2	O-Ring 2-224
F	1/4" BSPP

TECHNICAL DATA	
Material	Anodized aluminium corrosion resistant
Peak pressure	350 bar
Maximum pressure	300 bar
Maximum flow rate	300 l/min
Pilot ratio	1 3:1
	2 4.25:1
	3 8:1
	4 10:1
OVC relief valve setting range	A 20-200 bar standard setting 100 bar
	B 50-350 bar standard setting 280 bar
VLP relief valve setting range	A 20-100 bar standard setting 80 bar
	B 40-250 bar standard setting 180 bar
	C 60-350 bar standard setting 250 bar

Intermot distributor fitting

D75

ORVSA 480



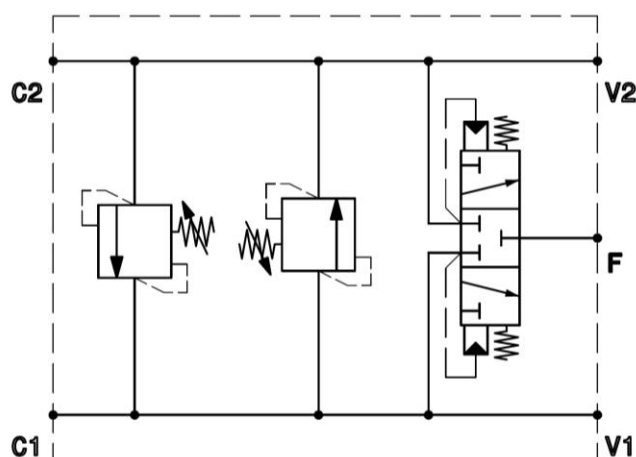
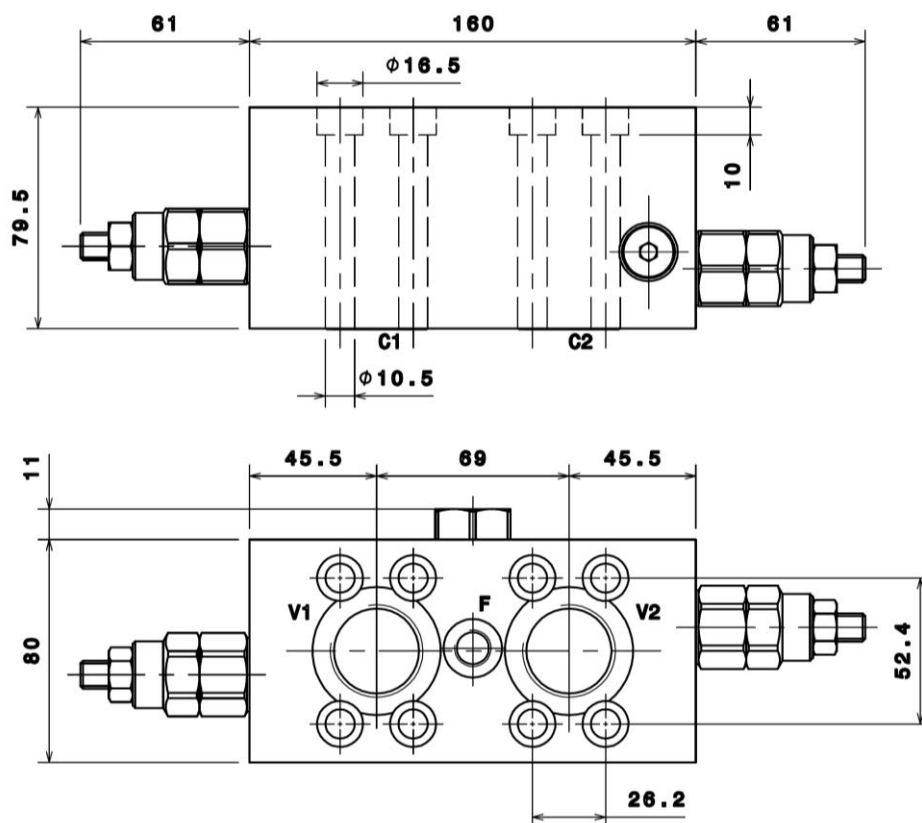
PORTS DIMENSION	
V1,V2	1"1/2 BSPP
C1,C2	O-Ring 2-225
F	1/4" BSPP

TECHNICAL DATA	
Material	Anodized aluminium corrosion resistant
Peak pressure	350 bar
Maximum pressure	300 bar
Maximum flow rate	480 l/min
Pilot ratio	1 3:1
	2 4.25:1
	3 8:1
OVC relief valve setting range	A 20-200 bar standard setting 100 bar
	B 50-350 bar standard setting 280 bar
VLP relief valve setting range	A 20-100 bar standard setting 80 bar
	B 40-250 bar standard setting 180 bar
	C 60-350 bar standard setting 250 bar

Intermot distributor fitting

D90

RVDAP 80



TECHNICAL DATA													
Material	Anodized aluminium corrosion resistant												
Maximum pressure	300 bar												
Maximum flow rate	80 l/min												
Relief valve setting range	<table border="1"> <tr> <td>A</td><td>20-100 bar</td></tr> <tr> <td></td><td>standard setting 80 bar</td></tr> <tr> <td>B</td><td>40-250 bar</td></tr> <tr> <td></td><td>standard setting 180 bar</td></tr> <tr> <td>C</td><td>60-350 bar</td></tr> <tr> <td></td><td>standard setting 250 bar</td></tr> </table>	A	20-100 bar		standard setting 80 bar	B	40-250 bar		standard setting 180 bar	C	60-350 bar		standard setting 250 bar
A	20-100 bar												
	standard setting 80 bar												
B	40-250 bar												
	standard setting 180 bar												
C	60-350 bar												
	standard setting 250 bar												

PORTS DIMENSION	
V1,V2	1" BSPP
C1,C2	O-Ring 2-125
F	1/4" BSPP

Intermot distributor fitting

D47

Ordering Instructions

— — — — —	— — — — —	—	—	—	— — — — —
Valve type					
OVDA					
OVSA					
RVDA					
ORVSA					
RVDAP					
	Size				
	80 (RVDAP)				
	160, 300, 480 (OVDA, OVSA, ORVSA)				
	80, 200, 380 (RVDA)				
	Pilot ratio				
	Only for OVDA, OVSA, ORVSA				
	1				
	2				
	3				
	4				
	Relief valve setting range				
	A				
	B				
	C				
	OVC (only for ORVSA)				
				Optional	
	A				
	B				
	C				
	VLP (only for ORVSA)				
				Intermot distributor fitting	
	D47				
	D75				
	D90				