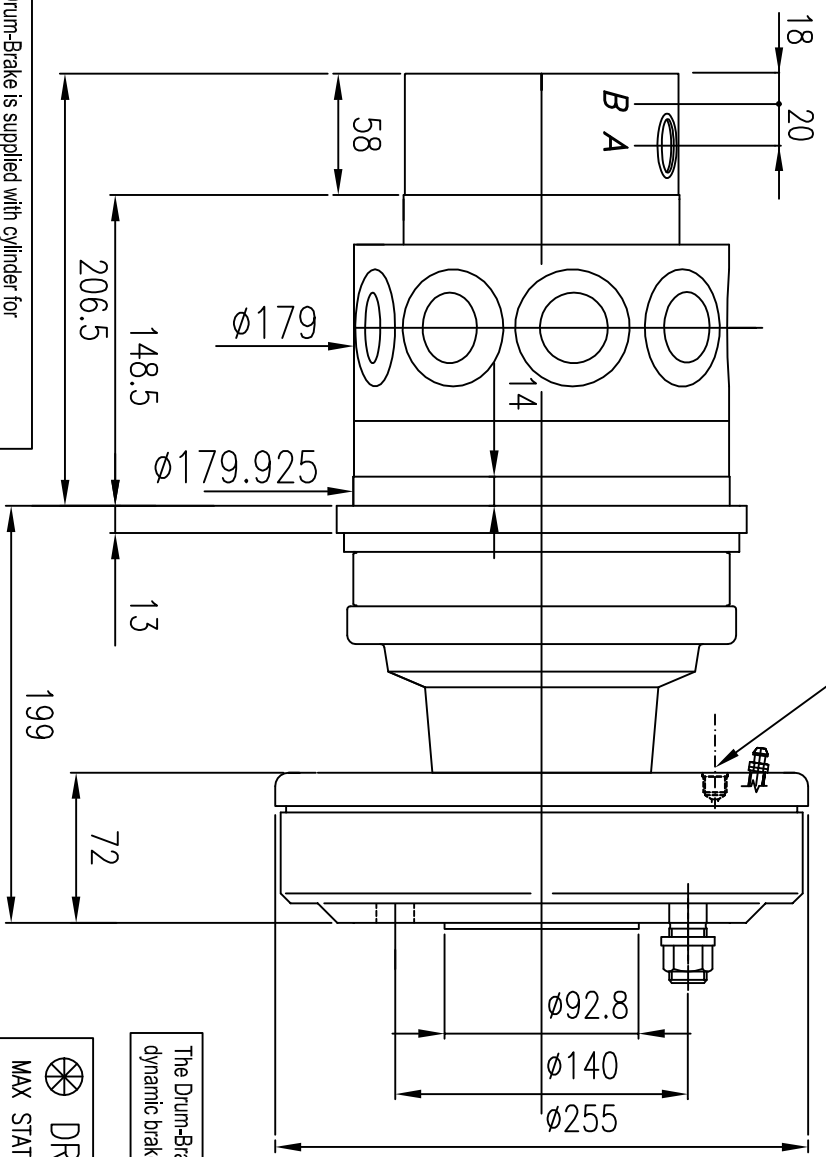


The Drum-Brake is supplied with cylinder for dynamic brake and cable for parking brake

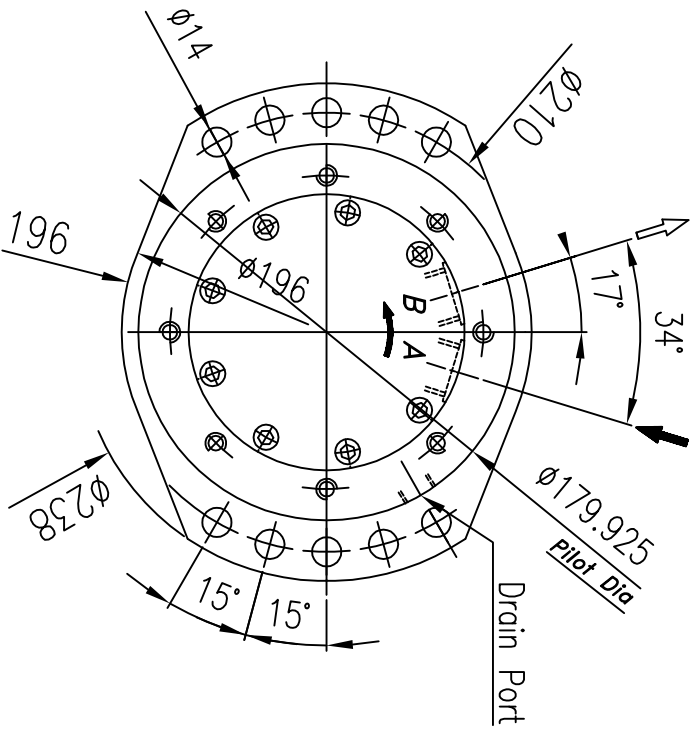
Brake port .X=7/16" 20UNF



The Drum-Brake is supplied with cylinder for dynamic brake and cable for parking brake

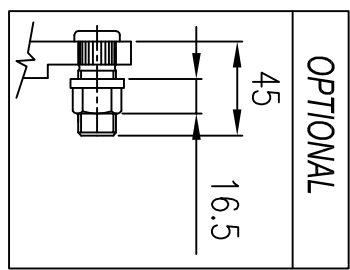
The Drum-Brake is supplied with cylinder for dynamic brake and cable for parking brake

DRUM BRAKE
 MAX STATIC BRAKING TORQUE Nm 2000
 MAX CYLINDER PRESSURE BAR 100



Port A=3/4" BSP
 Port B=3/4" BSP
 Drain Port=1/4" BSP

Reducer Ratio	Output Torque Nm		Max Input Rpm	Cont Press. Bar		Max Press. Bar		Total Displacement cc/Rev	Max Output Rpm
	Cont:	Max:		Bar	Bar	cc/Rev	Rpm		
1:3.55	1200	1420	2000	210	250	361	480		
1:4.28	1440	1720							
1:5.6	1620	1890							
1:6.75	1950	2280	180	210	681	250			



Oil Reducer-Lit	
Horizontal	1.0
Vertical	2.0