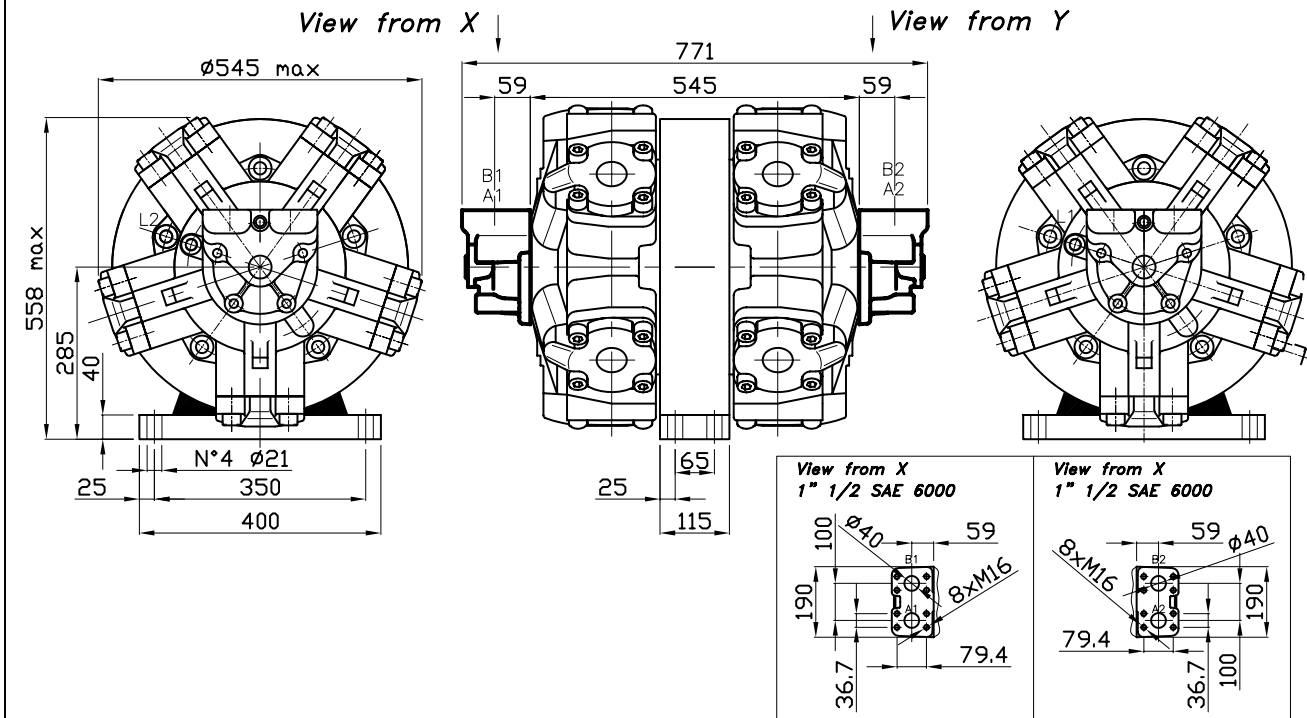


# SIZE

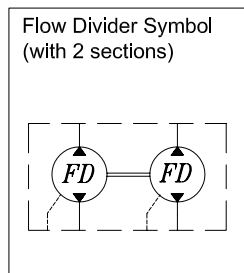
## FD 5 1400-1500-1600 D90



# TECHNICAL DATA

## FD 5 1400-1500-1600 D90

MODEL	Flow per section		Displacement per section cc/Rev	Working pressure			Power per section kW
	l/min (cont)	l/min (max)		continuous bar	intermittent bar	maximum bar	
FD 5 1400	290	340	1376	250	280	300	87
FD 5 1500	320	375	1528	250	280	300	96
FD 5 1600	350	400	1648	250	280	300	105



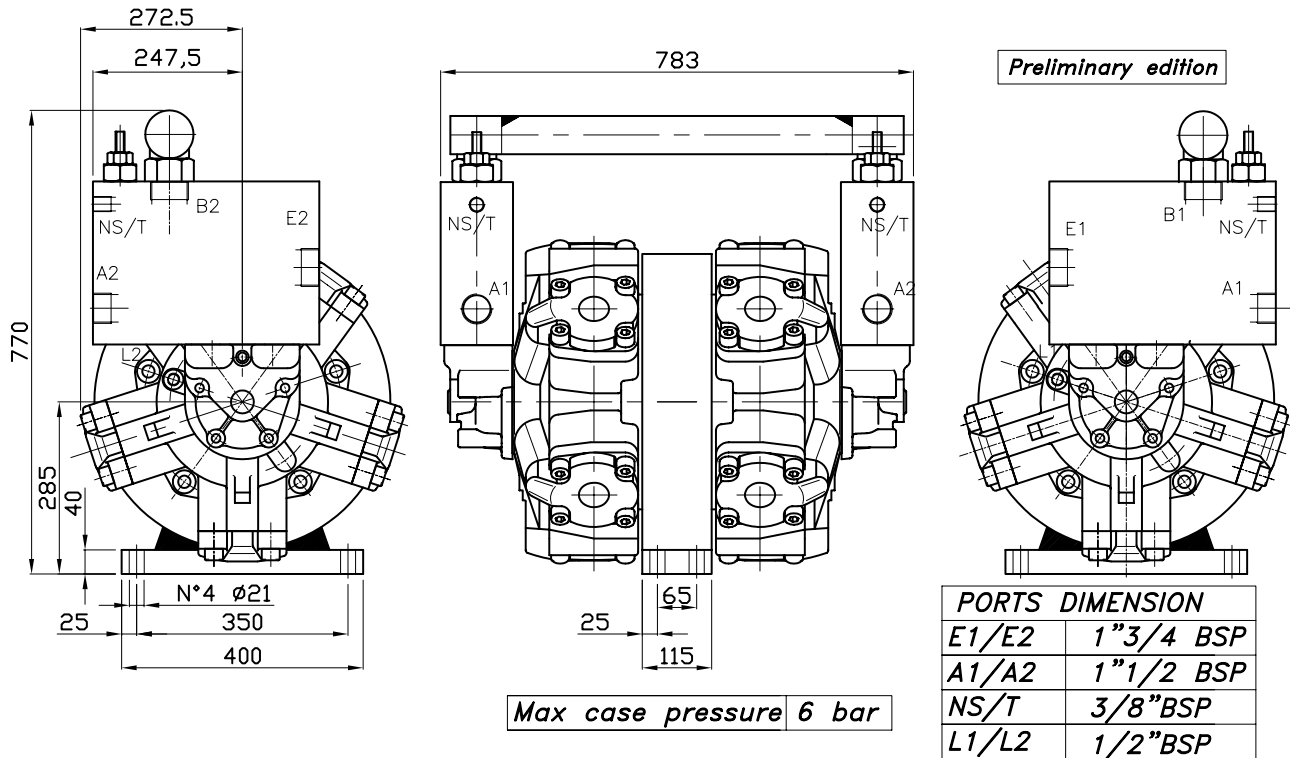
PORTS DIMENSION	
L1/L2	1/2" BSP

Dry weight	460 kg
------------	--------

Max case pressure	20 bar
-------------------	--------

## SIZE

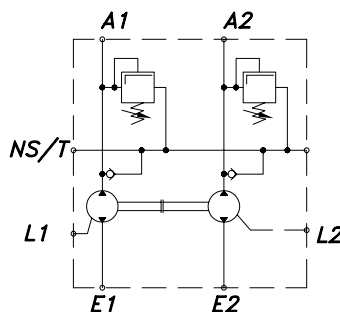
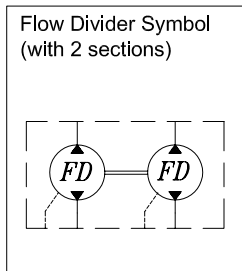
### FD 5 1400-1500-1600 D90 VB



## TECHNICAL DATA

### FD 5 1400-1500-1600 D90 VB

MODEL	Flow per section		Displacement per section cc/Rev	Working pressure			Power per section kW
	l/min (cont)	l/min (max)		continuous bar	intermittent bar	maximum bar	
FD 5 1400	290	340	1376	250	280	300	87
FD 5 1500	320	375	1528	250	280	300	96
FD 5 1600	350	400	1648	250	280	300	105



RELIEF VALVE DATA	
Rated flow	40 l/min
Adjustable pressure range	5-50 bar
	30-100 bar
	50-220 bar
	80-350 bar

Dry weight 460 kg

Max case pressure 20 bar