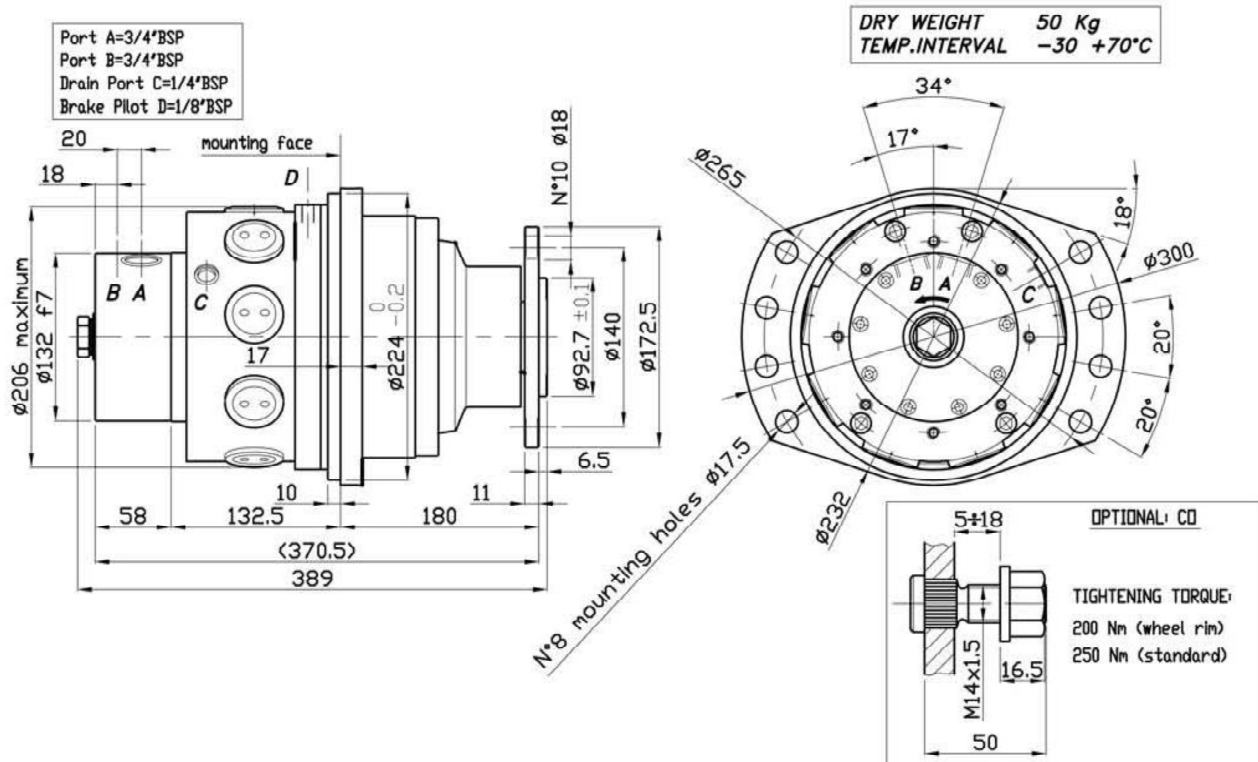


**W 05 – GD100**  
***Dimensional drawings***

# W 05 – GD100



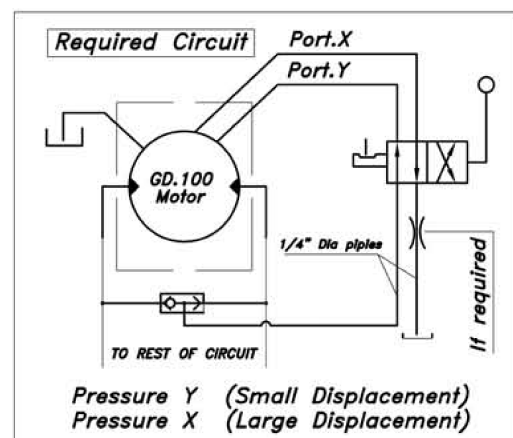
## DUAL DISPLACEMENT

## NOTES

*Displacement change sistem  
is realized HYDRAULICALLY &  
requires system pressure for  
operation*

One port must be pressurised continuously to maintain given capacity, other port is connected to drain

**Displacement change required Circuit**



\* For the hydraulic circuit, please refer to freewheeling application (page