

***Intermot Hydraulic Motors***  
***IHM Series***

---

***H7 Model***

---

***IHM 5000 – 5400 – 6000 – 6300 – 7000 H7***

---

***INDEX***

TECHNICAL DATA	Pag. 33
IHM 5000 – 5400 – 6000	
6300 - 7000 H7	Pag. 34
ORDERING INSTRUCTIONS	Pag. 35

# IHM H7

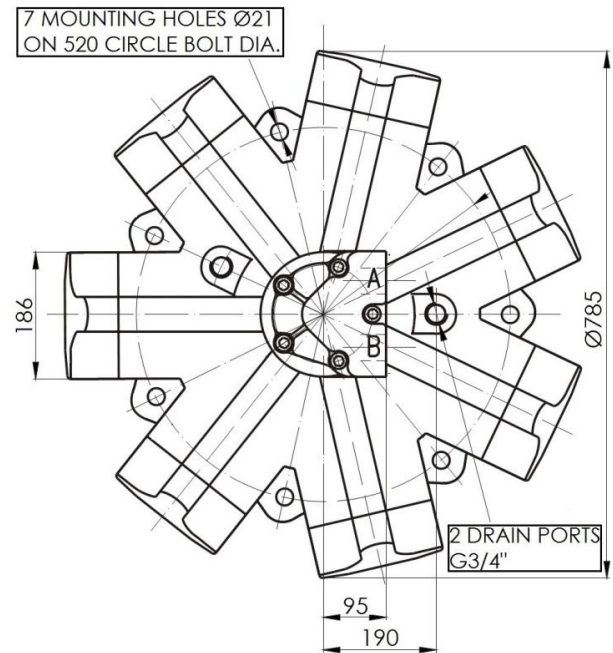
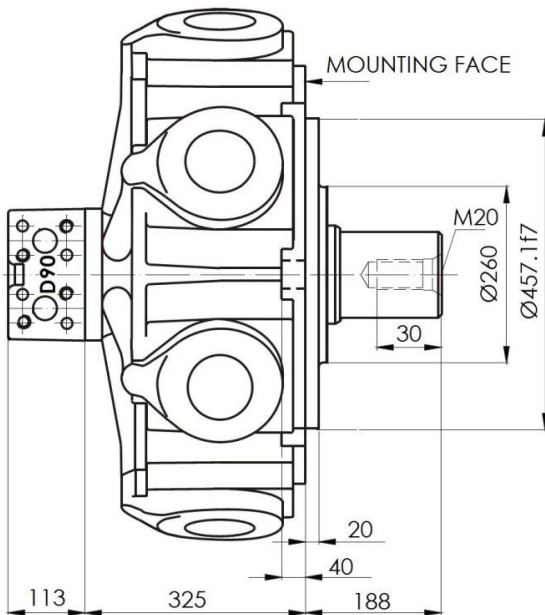
## Technical data

MODEL		N° of pistons	Displacement	Pressure		Speed		Torque		Dry Mass
				Max Cont.	Peak	Minimum speed	Max speed	Rated	Specific	
			cm3/rev	bar		rpm		Nm	Nm/MPa	kg
IHM H7	5000	7	4968	200	250	1	160	14626	731	550
	5400		5452	200	250	1	160	16125	806	
	6000		5984	200	250	0,5	125	17697	885	
	6300		6540	180	220	0,5	125	17408	967	
	7000		7122	160	200	0,5	125	16849	1053	

# IHM H7

## Dimensional drawings

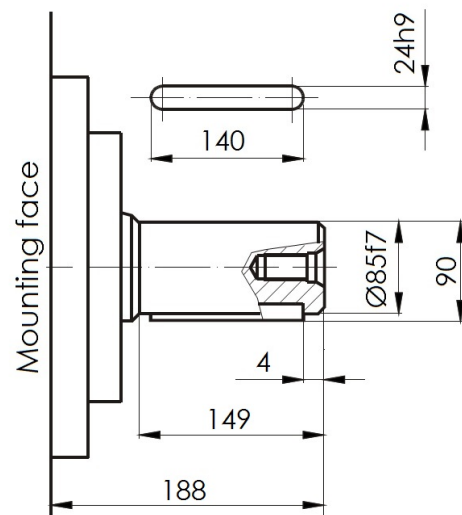
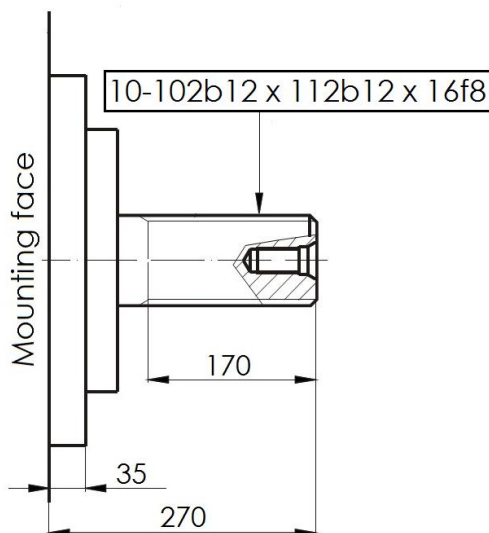
### IHM 5000 – 5400 – 6000 – 6300 – 7000 H7



### SHAFTS

A1: Standard splined shaft

A2: Parallel Shaft on Request



For further shaft configurations, please contact our technical department

# IHM H7

## Ordering instructions

IHM	-----	H7	A __	D __
Model				
	<b>Displacement</b>			
	5000 cc/rev			
	5400 cc/rev			
	6000 cc/rev			
	6300 cc/rev			
	7000 cc/rev			
		<b>Housing</b>		
			<b>Shaft</b>	
	A0 – Standard splined shaft			
	A2 – Parallel keyed shaft			
				<b>Distributor</b>
	D90 – SAE 1 ½ " 6000 psi flange			

**EXAMPLE : IHM 5400 H7 A0 D90**