

---

# ***Intermot Hydraulic Motors IHM Series***

---

## ***H1 Models***

---

***IHM 70 – 80 – 100 – 125 – 150 – 200 H1***

---

## ***INDEX***

TECHNICAL DATA	Pag. 5
IHM 70 – 80 – 100 – 125	
150 – 200 H1	Pag. 6
ORDERING INSTRUCTIONS	Pag. 7

# IHM H1

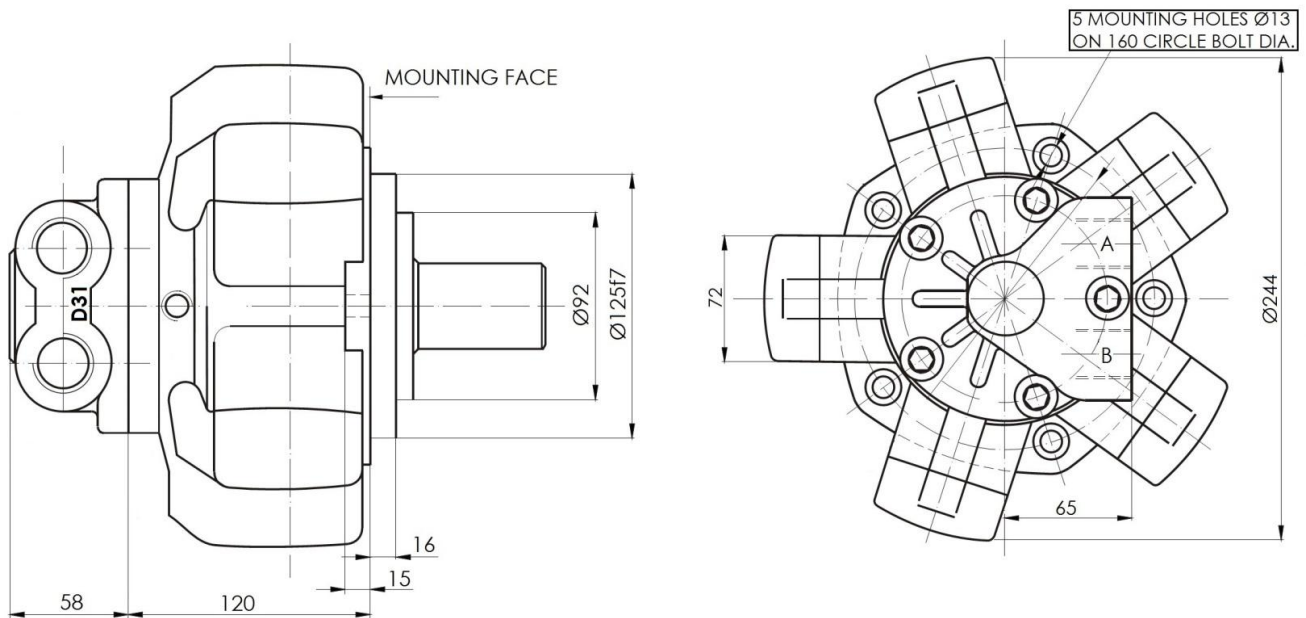
## Technical data

MODEL		N° of pistons	Displacement	Pressure		Speed		Torque		Dry Mass
				Max Cont.	Peak	Minimum speed	Max speed	Rated	Specific	
			cm3/rev	bar		rpm		Nm	Nm/MPa	kg
IHM H1	70	5	77	250	320	15	1500	284	11	20
	80		91	250	320	15	1250	335	13	
	100		96	250	320	15	1000	355	14	
	125		126	200	250	15	1000	371	19	
	150		159	160	200	15	1000	376	24	
	200		196	160	200	15	800	464	29	

# IHM H1

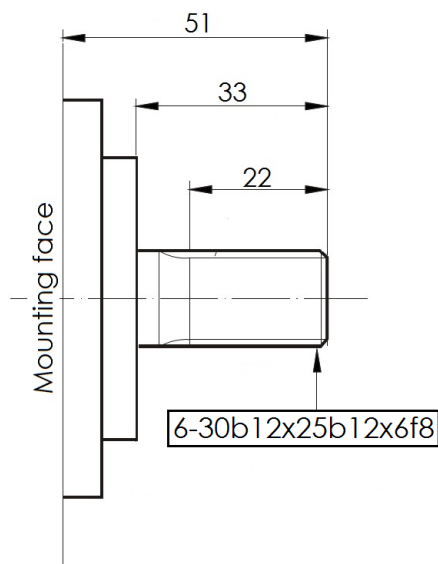
## Dimensional drawings

### IHM 70 – 80 – 100 – 125 – 150 – 200 H1

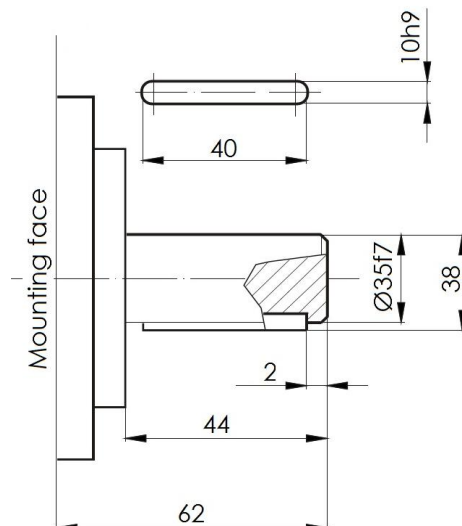


#### SHAFTS

##### A0: Standard Splined Shaft



##### A2: Parallel Shaft on Request



For further shaft configurations, please contact our technical department

# IHM H1

## Ordering instructions

IHM	---	H1	A _	D _ _
Model	Displacement	Housing	Shaft	Distributor
70 cc/rev				
80 cc/rev				
100 cc/rev				
125 cc/rev				
150 cc/rev				
200 cc/rev				
H1				
A0 – Standard splined shaft				
A2 – Parallel keyed shaft				
D31 – ¾" BSP				
D310 – 1" BSP				
D40 – 1" BSP				
D47 – SAE 1" 3000 psi flange				

**EXAMPLE : IHM 100 H1 A0 D31**